

WAAS CH <b>90219</b> <b>W19A</b>	APP CRS <b>192°</b>	Rwy Idg TDZE <b>237</b> Apt Elev <b>245</b>	<b>5000</b>
--	------------------------	---	-------------

# RNAV (GPS) RWY 19

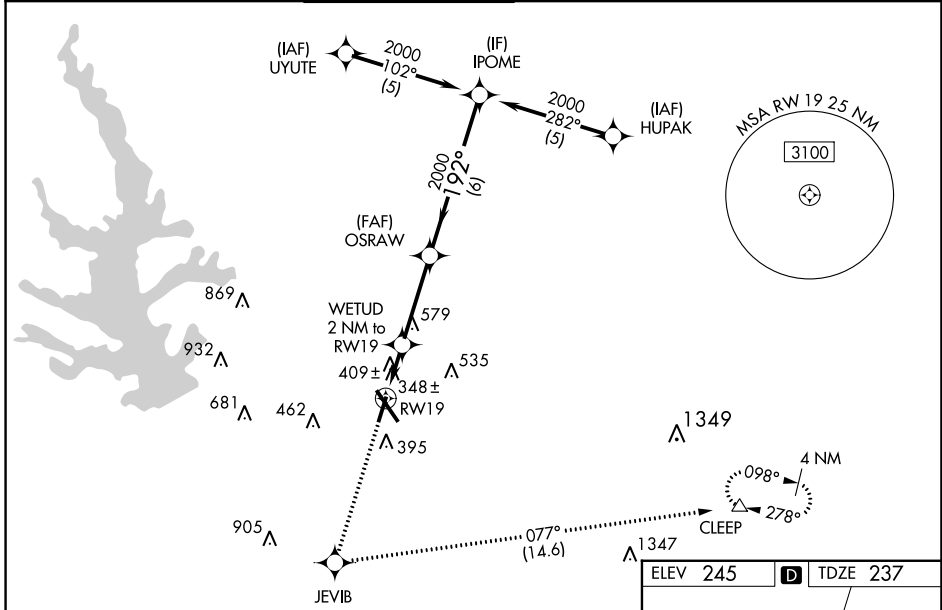
CONROE/NORTH HOUSTON RGNL (C'XO)

RNP APCH - GPS.

▼ Rwy 19 helicopter visibility reduction below 3/4 SM NA. For uncompensated Baro-VNAV systems, LNAV/VNAV NA below -15°C or above 54°C. When local altimeter setting not received, use David Wayne Hooks Meml altimeter setting and increase LPV DA to 584 feet and all visibilities 1/2 SM. Increase LNAV/VNAV DA to 739 feet; increase all MDAs 60 feet and LNAV visibility Cat C/D 1/2 SM, and Circling visibility Cat C/D 1/2 SM. Baro-VNAV and VDP NA when using David Wayne Hooks Meml altimeter setting.

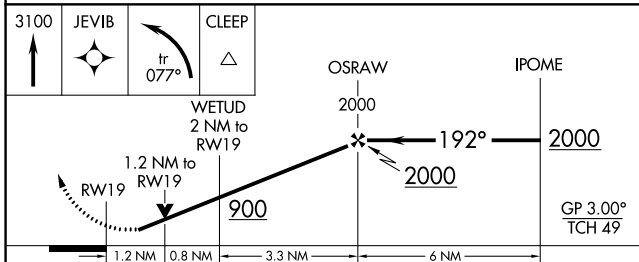
MISSED APPROACH: Climb to 3100 direct JEVIB and left turn on track 077° to CLEEP and hold.

ATIS <b>118.325</b>	HOUSTON APP CON <b>119.7 281.4</b>	CONROE TOWER ★ <b>124.125</b> (CTAF) 📻	GND CON <b>120.45</b>	CLNC DEL <b>120.45</b>	CLNC DEL <b>119.55</b> (When twr closed)
------------------------	---------------------------------------	---	--------------------------	---------------------------	--



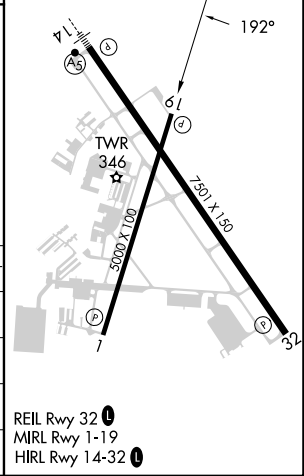
SC-5, 03 OCT 2024 to 31 OCT 2024

SC-5, 03 OCT 2024 to 31 OCT 2024



ELEV 245	<b>D</b>	TDZE 237
----------	----------	----------

CATEGORY	A	B	C	D
LPV DA	527-1 290 (300-1)			
LNAV/VNAV DA	682-1 1/2 445 (500-1 1/2)			
LNAV MDA	660-1 423 (500-1)		660-1 1/4 423 (500-1 1/4)	
<b>C</b> CIRCLING	700-1 455 (500-1)		880-1 3/4 635 (700-1 3/4) 960-2 1/4 715 (800-2 1/4)	



REIL Rwy 32 📻  
MIRL Rwy 1-19  
HIRL Rwy 14-32 📻