

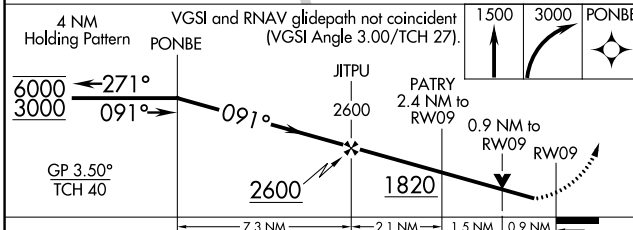
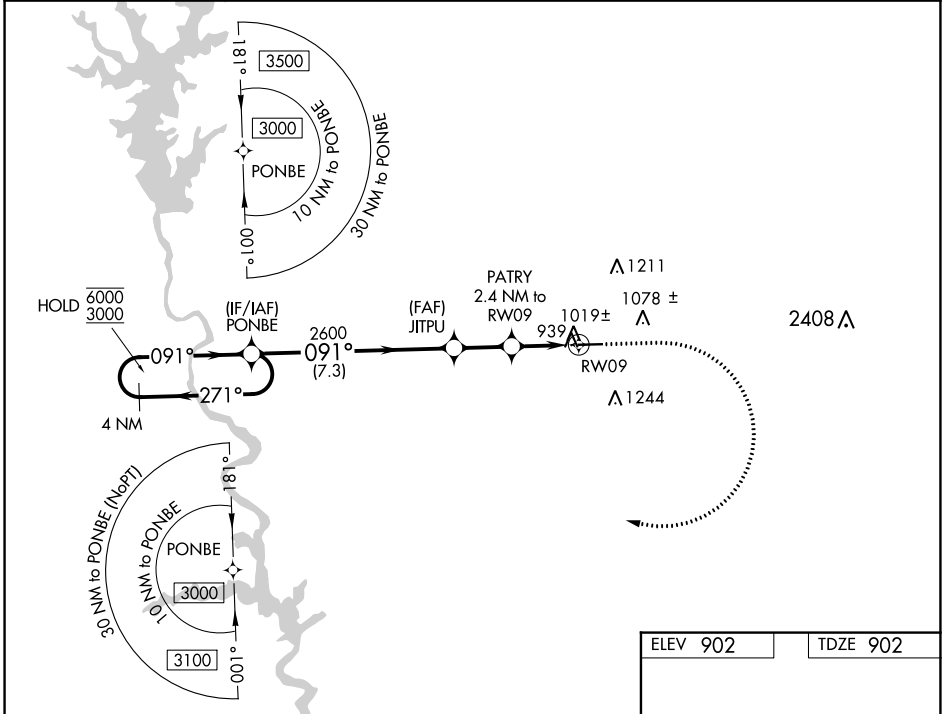
WAAS CH <b>58019</b> <b>W09A</b>	APP CRS <b>091°</b>	Rwy Idg TDZE Apt Elev	<b>5002</b> <b>902</b> <b>902</b>
--	------------------------	-----------------------------	---

# RNAV (GPS) RWY 9

HARRIS COUNTY (PIM)

RNP APCH - GPS.		<p><b>▽</b> Circling Rwy 27 NA at night. Rwy 9 helicopter visibility reduction below 3/4 SM NA.  <b>▲</b> For uncompensated Baro-VNAV systems, LNAV/VNAV NA below -16°C or above 48°C.</p>		<p>MISSED APPROACH: Climb to 1500 then climbing right turn to 3000 direct PONBE and hold.</p>	
-----------------	--	--	--	---	--

AWOS-3PT <b>120.275</b>	ATLANTA APP CON* <b>125.5 323.1</b>	CLNC DEL <b>127.7</b>	GCO <b>121.725</b>	UNICOM <b>122.8 (CTAF) 0</b>
----------------------------	--	--------------------------	-----------------------	---------------------------------



ELEV 902	TDZE 902
MIRL Rwy 9-27 0	

CATEGORY	A	B	C	D
LPV DA		1213-7/8	311 (400-7/8)	
LNAV/VNAV DA		1245-1	343 (400-1)	
LNAV MDA		1280-1	378 (400-1)	
<b>C</b> CIRCLING	1320-1 418 (500-1)	1440-1 538 (600-1)	1700-2 1/4 798 (800-2 1/4)	1820-3 918 (1000-3)

SE-4, 03 OCT 2024 to 31 OCT 2024

SE-4, 03 OCT 2024 to 31 OCT 2024