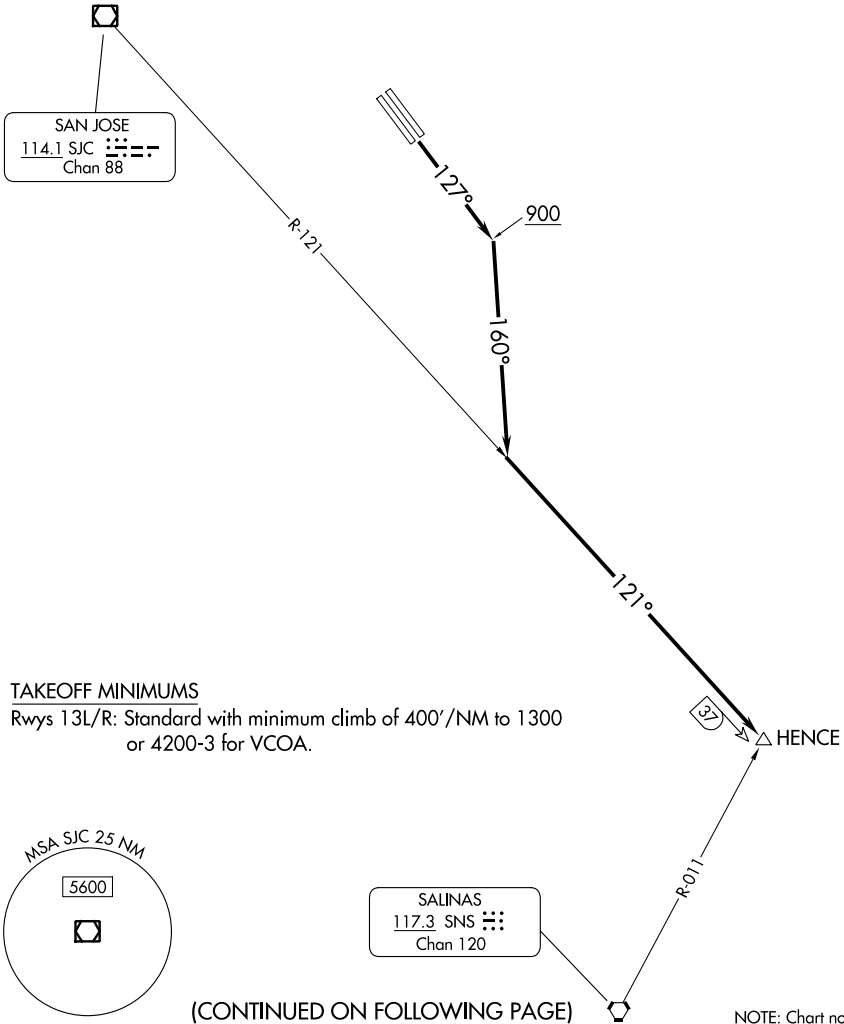


(HENCE1 .HENCE) 24249

# HENCE ONE DEPARTURE (OBSTACLE)

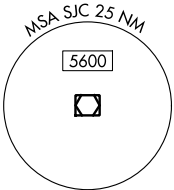
REID-HILLVIEW OF SANTA CLARA COUNTY (R.H.V)  
AL-5591 (FAA) SAN JOSE, CALIFORNIA

NORCAL DEP CON  
121.3 270.35



### TAKEOFF MINIMUMS

Rwys 13L/R: Standard with minimum climb of 400'/NM to 1300 or 4200-3 for VCOA.



(CONTINUED ON FOLLOWING PAGE)

NOTE: Chart not to scale.

### DEPARTURE ROUTE DESCRIPTION

TAKEOFF RUNWAYS 13L/R: Climb on heading 127° to 900, then climbing right turn to heading 160° to intercept SJC VOR/DME R-121 to HENCE.

VCOA RUNWAYS 13L/R: Obtain ATC approval for VCOA when requesting IFR clearance. Climb in visual conditions to cross Reid-Hillview of Santa Clara County Airport at or above 4200 before proceeding on course.

# HENCE ONE DEPARTURE (OBSTACLE)

(HENCE1 .HENCE) 05SEP24

SAN JOSE, CALIFORNIA  
REID-HILLVIEW OF SANTA CLARA COUNTY (R.H.V)

SW-2, 03 OCT 2024 to 31 OCT 2024

SW-2, 03 OCT 2024 to 31 OCT 2024