

APP CRS	Rwy Idg	2690
312°	TDZE	133
	Apt Elev	135

RNAV (GPS) Y RWY 31R

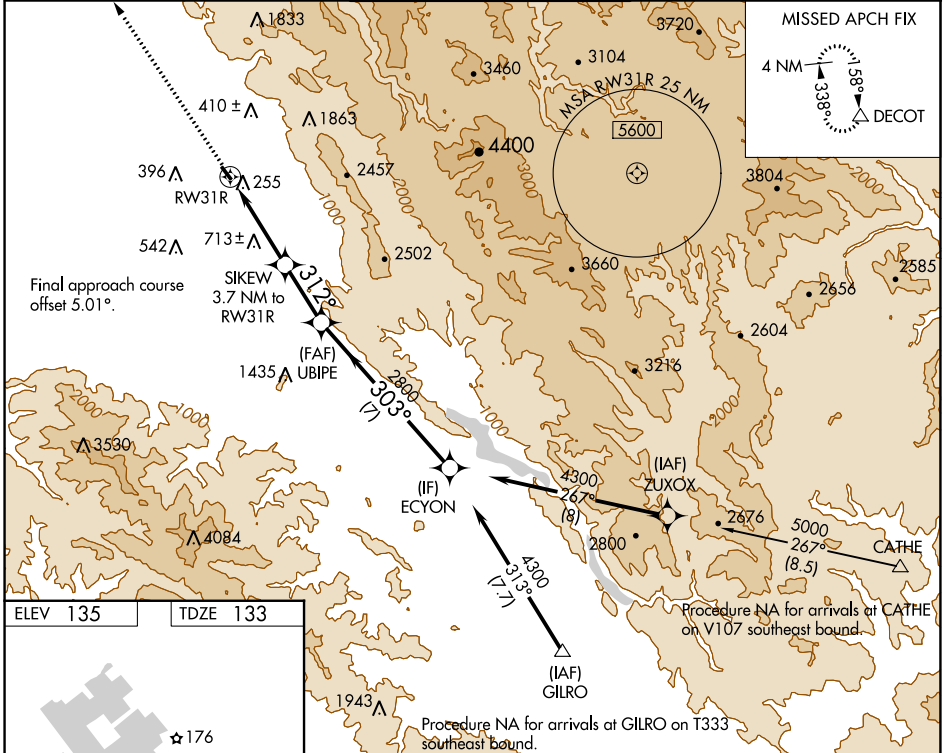
REID-HILLVIEW OF SANTA CLARA COUNTY (R.H.V)

RNP APCH.

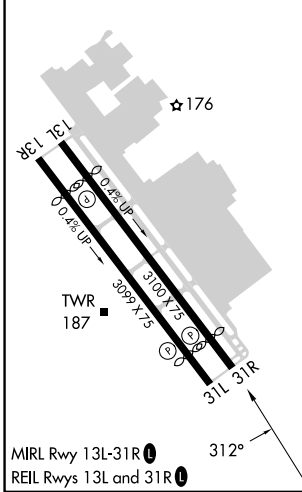
NA Circling Rwy 31L NA at night. Rwy 31R helicopter visibility reduction below 3/4 SM NA. VDP NA when using Norman Y Mineta San Jose Intl altimeter setting. Circling east of Rwy 13L-31R NA at night. When control tower closed, use Norman Y Mineta San Jose Intl altimeter setting and increase all MDA's 40 feet.

MISSED APPROACH: Climb to 4000 direct DECOY and hold.

ATIS	NORCAL APP CON	REID-HILLVIEW TOWER * (Rwy 13L-31R) (Rwy 13R-31L)	GND CON	UNICOM
125.2	120.1 290.25	119.8 (CTAF) 126.1	121.65	122.95



ELEV 135	TDZE 133
----------	----------



4000	DECOY	RWY 31R	SIKEW 3.7 NM to RWY 31R	UBIPE	ECYON
	↑		△	2.6 NM to RWY 31R	2800
		2.6 NM		1.1 NM	
		312°		303°	
		1760		2800	
		≤ 4.00° TCH 45			
		2.6 NM		7 NM	
CATEGORY	A	B	C	D	
LNAV MDA	1300-1¼ 1167 (1200-1¼)	1300-1½ 1167 (1200-1½)	NA		
CIRCLING	1300-1¼ 1165 (1200-1¼)	1300-1½ 1165 (1200-1½)	NA		

SW-2, 03 OCT 2024 to 31 OCT 2024

SW-2, 03 OCT 2024 to 31 OCT 2024