

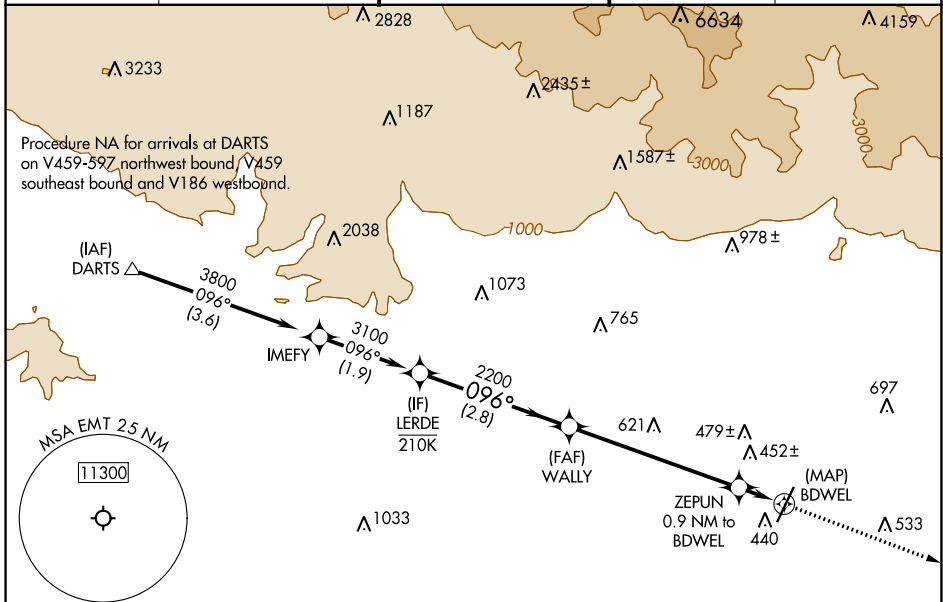
APP CRS	Rwy Idg	N/A
096°	TDZE	N/A
	Apt Elev	296

RNAV (GPS)-B

SAN GABRIEL VALLEY (EMT)

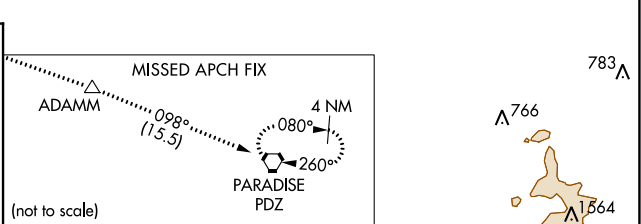
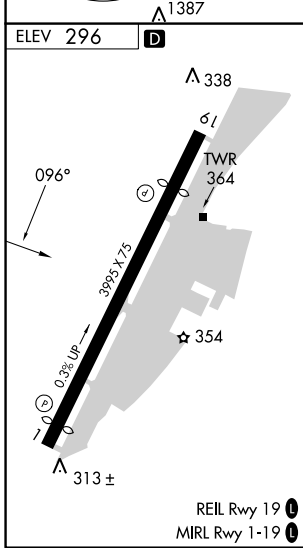
RNP APCH-GPS.		MISSED APPROACH: Climb to 4000 direct ADAMM and on track 098° to PDZ VORTAC and hold.		
<p>∇ Circling Rwy 1 NA at night. Rwy 1, 19 helicopter visibility reduction below 1 SM NA.</p>				

ATIS 118.75	SOCAL APP CON 125.5 349.0	EL MONTE TOWER * 121.2 (CTAF) 0	GND CON 125.9	UNICOM 122.95
-----------------------	-------------------------------------	--	-------------------------	-------------------------



SW-3, 03 OCT 2024 to 31 OCT 2024

SW-3, 03 OCT 2024 to 31 OCT 2024



LERDE	WALLY	ZEPUN 0.9 NM to BDWEL	BDWEL
3100	2200	1120	
2.8 NM		3.2 NM	
		0.9	

CATEGORY	A	B	C	D
CIRCLING	820-1 524 (600-1)	960-1 664 (700-1)	1140-2½ 844 (900-2½)	1300-3 1004 (1100-3)