

APP CRS	Rwy Idg	5009
137°	TDZE	494
	Apt Elev	494

RNAV (GPS) RWY 14

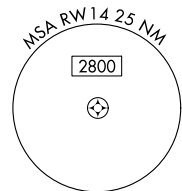
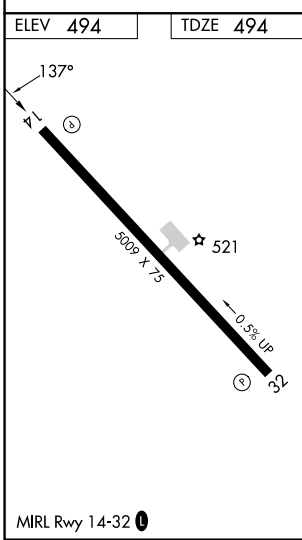
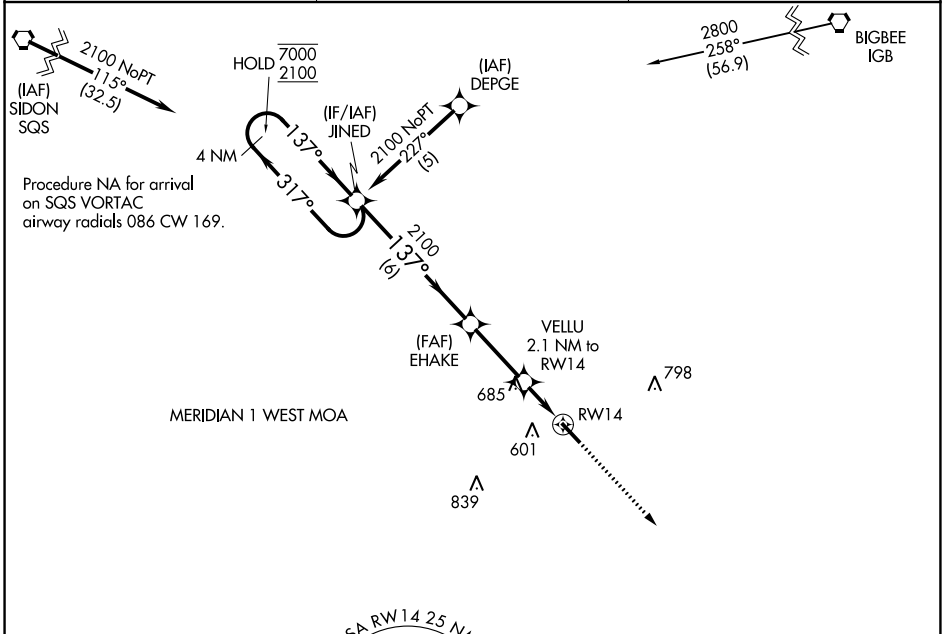
KOSCIUSKO-ATTALA COUNTY (OSX)

RNP APCH - GPS.

NA Rwy 14 helicopter visibility reduction below 1 SM NA. Procedure NA at night. Use Philadelphia altimeter setting; when not received, use Greenwood altimeter setting and increase all MDAs 80 feet, increase visibility LNAV Cat C ¼ SM and Circling Cat C ¾ SM.

MISSED APPROACH: Climb to 2200 direct GUDRE and hold.

MPE AWOS-3P 118.725	MEMPHIS CENTER 132.75 263.0	CTAF 122.9
-------------------------------	---------------------------------------	----------------------



4 NM Holding Pattern		JINED	EHAKE	VELLU 2.1 NM to RW14	RW14
7000	← 317°	→ 137°	→ 137°	→ 137°	→ 137°
2100	← 137°	→ 137°	→ 137°	→ 137°	→ 137°
		6 NM	2.8 NM	2.1 NM	
CATEGORY	A	B	C	D	
LNAV MDA	1020-1	526 (600-1)	1020-1½ 526 (600-1½)	NA	
CIRCLING	1020-1	526 (600-1)	1160-1¾ 666 (700-1¾)	NA	

SC-4, 03 OCT 2024 to 31 OCT 2024

SC-4, 03 OCT 2024 to 31 OCT 2024