

APP CRS	Rwy Idg	5009
	TDZE	480
317°	Apt Elev	494

RNAV (GPS) RWY 32

KOSCIUSKO-ATTALA COUNTY (OSX)

RNP APCH - GPS

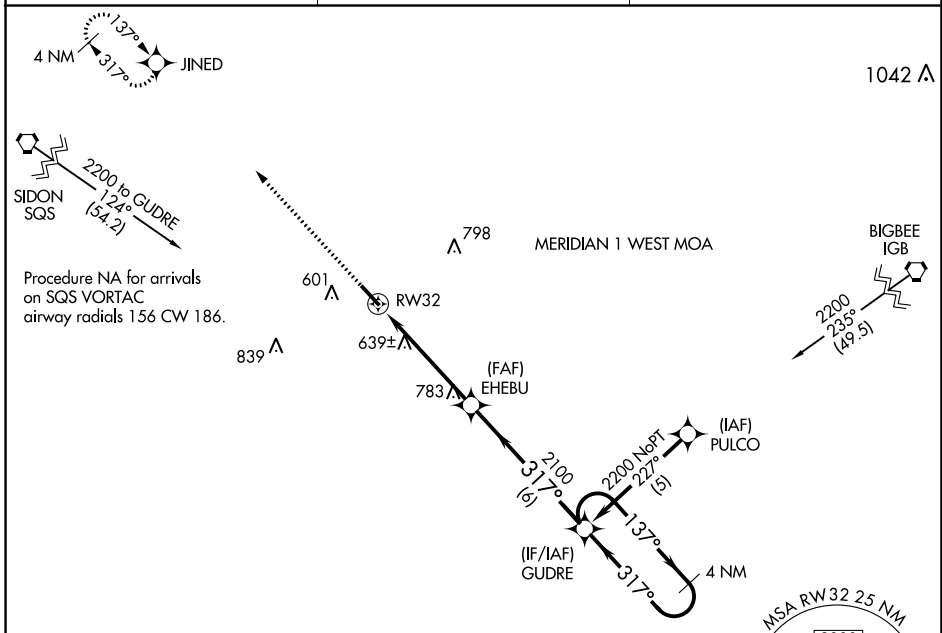
▼ Rwy 32 helicopter visibility reduction below 1 SM NA. Procedure NA at night. Use Philadelphia altimeter setting; when not received, use Greenwood altimeter setting and increase all MDAs 80 feet, increase visibility LNAV Cat C 3/4 SM and Circling Cat C 3/4 SM.

MISSED APPROACH: Climb to 2100 direct JINED and hold.

MPE AWOS-3P
118.725

MEMPHIS CENTER
132.75 263.0

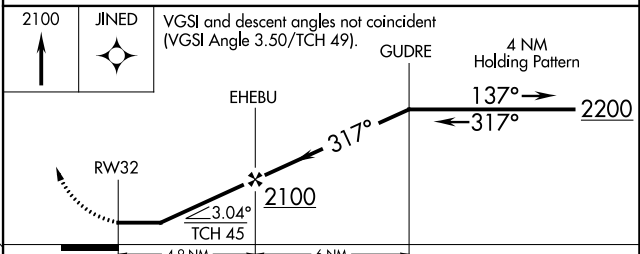
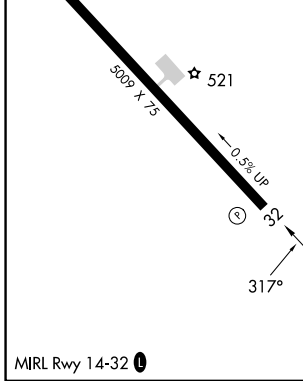
CTAF
122.9 0



SC-4, 03 OCT 2024 to 31 OCT 2024

SC-4, 03 OCT 2024 to 31 OCT 2024

ELEV	494	TDZE	480
------	-----	------	-----



CATEGORY	A	B	C	D
LNAV MDA	960-1	480 (500-1)	960-1 3/8 480 (500-1 3/8)	NA
CIRCLING	1020-1	526 (600-1)	1160-1 3/4 666 (700-1 3/4)	NA