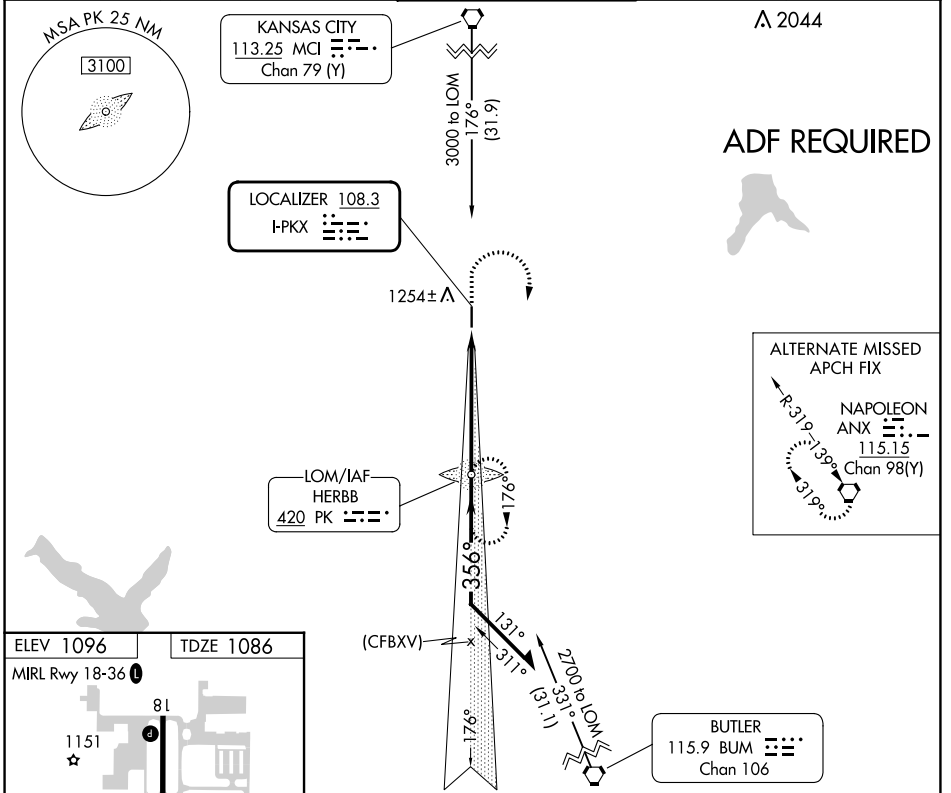


LOC I-PKX 108.3	APP CRS 356°	Rwy ldg 4097
		TDZE 1086
		Apt Elev 1096

LOC RWY 36

JOHNSON COUNTY EXEC (OJC)

NA Helicopter visibility reduction below 3/4 SM not authorized. For inoperative MALSRS, increase S-36 Cats A and B visibility 1/4 mile.	MALSRS 		MISSED APPROACH: Climb to 1700 then climbing right turn to 2700 direct HERBB LOM and hold.	
	ATIS 119.35	KANSAS CITY APP CON 118.9 251.075	EXECUTIVE TOWER* 126.0 (CTAF) 225.4	GND CON 121.6



Remain within 10 NM PK LOM 1700 2700 176° 356° 2700 2.85° TCH 40 5.3 NM	1700	2700	PK	
	CATEGORY	A	B	C
S-36	1580-3/4	494 (500-3/4)	1580-1 494 (500-1)	NA
CIRCLING	1620-1	524 (600-1)	1620-1 1/2 524 (600-1 1/2)	NA

FAF to MAP 5.3 NM					
Knots	60	90	120	150	180
Min:Sec	5:18	3:32	2:39	2:07	1:46

NC-2, 03 OCT 2024 to 31 OCT 2024

NC-2, 03 OCT 2024 to 31 OCT 2024