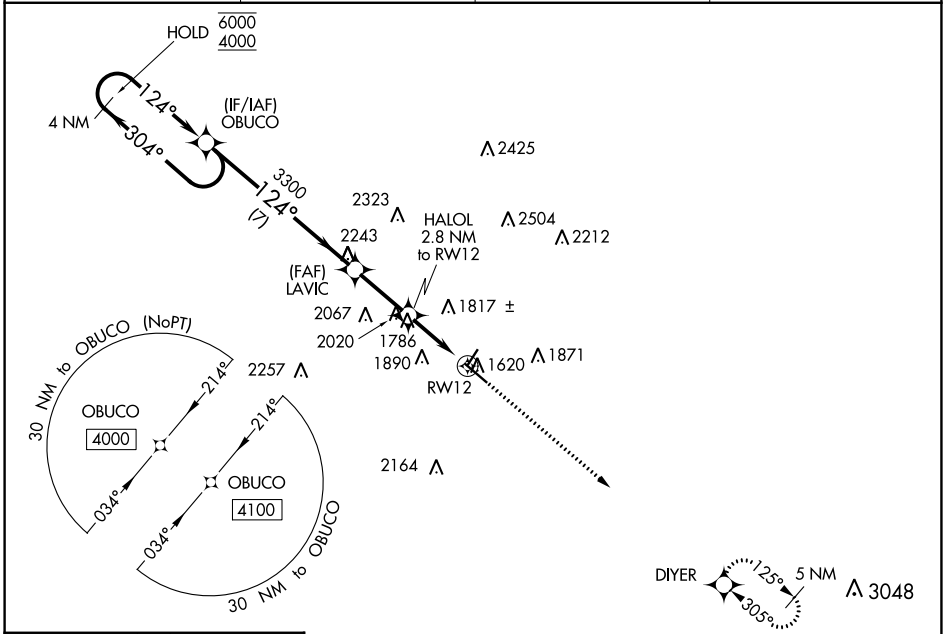


WAAS CH <b>45628</b> W12A	APP CRS <b>124°</b>	Rwy Idg TDZE Apt Elev	<b>5313</b> <b>1586</b> <b>1617</b>
---------------------------------	------------------------	-----------------------------	---

# RNAV (GPS) RWY 12

KERRVILLE MUNI/LOUIS SCHREINER FLD (ERV)

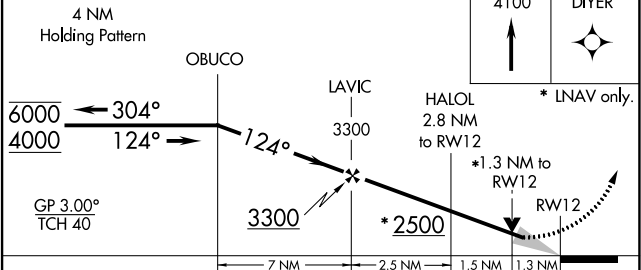
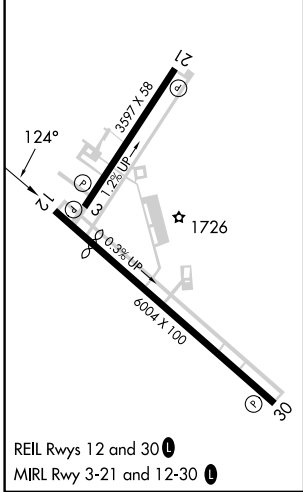
RNP APCH.			MISSED APPROACH: Climb to 4100 direct DIYER and hold.
<p>⚠ For uncompensated Baro-VNAV systems, LNAV/VNAV NA below -18°C or above 54°C.</p>			
AWOS-3 <b>118.125</b>	HOUSTON CENTER <b>134.95 269.4</b>	CLNC DEL <b>134.95</b>	UNICOM <b>122.7 (CTAF) 0</b>



SC-3, 03 OCT 2024 to 31 OCT 2024

SC-3, 03 OCT 2024 to 31 OCT 2024

ELEV 1617	<b>D</b>	TDZE 1586
-----------	----------	-----------



CATEGORY	A	B	C	D
LPV DA		1836-1	250 (300-1)	
LNAV/VNAV DA		1936-1½	350 (400-1½)	
LNAV MDA	2040-1	454 (500-1)	2040-1¾	454 (500-1¾)
<b>C</b> CIRCLING	2320-1 703 (800-1)	2340-1 723 (800-1)	2380-2¼ 763 (800-2¼)	2540-3 923 (1000-3)

KERRVILLE, TEXAS  
Amdt 1B 30JAN20

KERRVILLE MUNI/LOUIS SCHREINER FLD (ERV)  
29°59' N-99°05' W  
**RNAV (GPS) RWY 12**