

VORTAC CSI 117.5 Chan 122	APP CRS 055°	Rwy Idg TDZE Apt Elev 1617	N/A N/A 1617
---	------------------------	--	--------------------

VOR-A

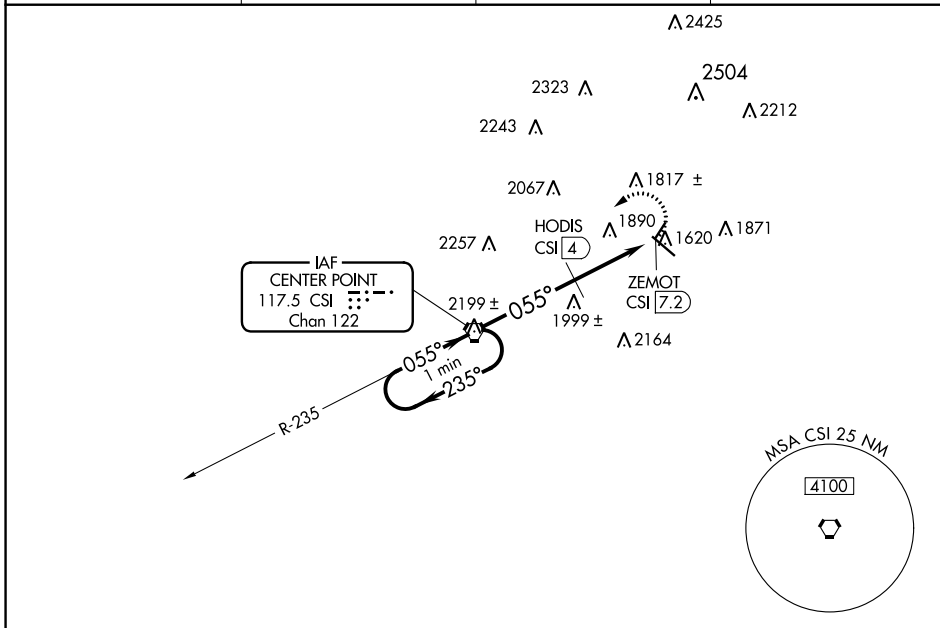
KERRVILLE MUNI/LOUIS SCHREINER FLD (ERV)

▼ When local altimeter setting not received, use Fredericksburg altimeter setting and increase all MDAs 60 feet, increase Cat C visibility ¼ SM and HODIS fix minimums Cat C visibility ¼ SM.

▲

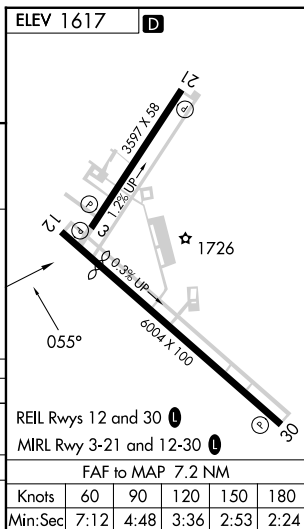
MISSED APPROACH: Climbing left turn to 4000 direct CSI VORTAC.

AWOS-3 118.125	HOUSTON CENTER 134.95 269.4	CLNC DEL 134.95	UNICOM 122.7 (CTAF) 0
--------------------------	---------------------------------------	---------------------------	---------------------------------



SC-3, 03 OCT 2024 to 31 OCT 2024

SC-3, 03 OCT 2024 to 31 OCT 2024



One Minute Holding Pattern	CSI VORTAC	HODIS CSI 4	ZEMOT CSI 7.2
4000	← 235°	055°	055°
*2500 when using Gillespie County altimeter setting.		*2440	
	4 NM	3.2 NM	

CATEGORY	A	B	C	D
CIRCLING	2440-1¼ 823 (900-1¼)	2440-1¼ 823 (900-1¼)	2440-2½ 823 (900-2½)	NA
HODIS FIX MINIMUMS				
CIRCLING	2320-1 703 (800-1)	2340-1 723 (800-1)	2380-2¼ 763 (800-2¼)	NA

VOR-A