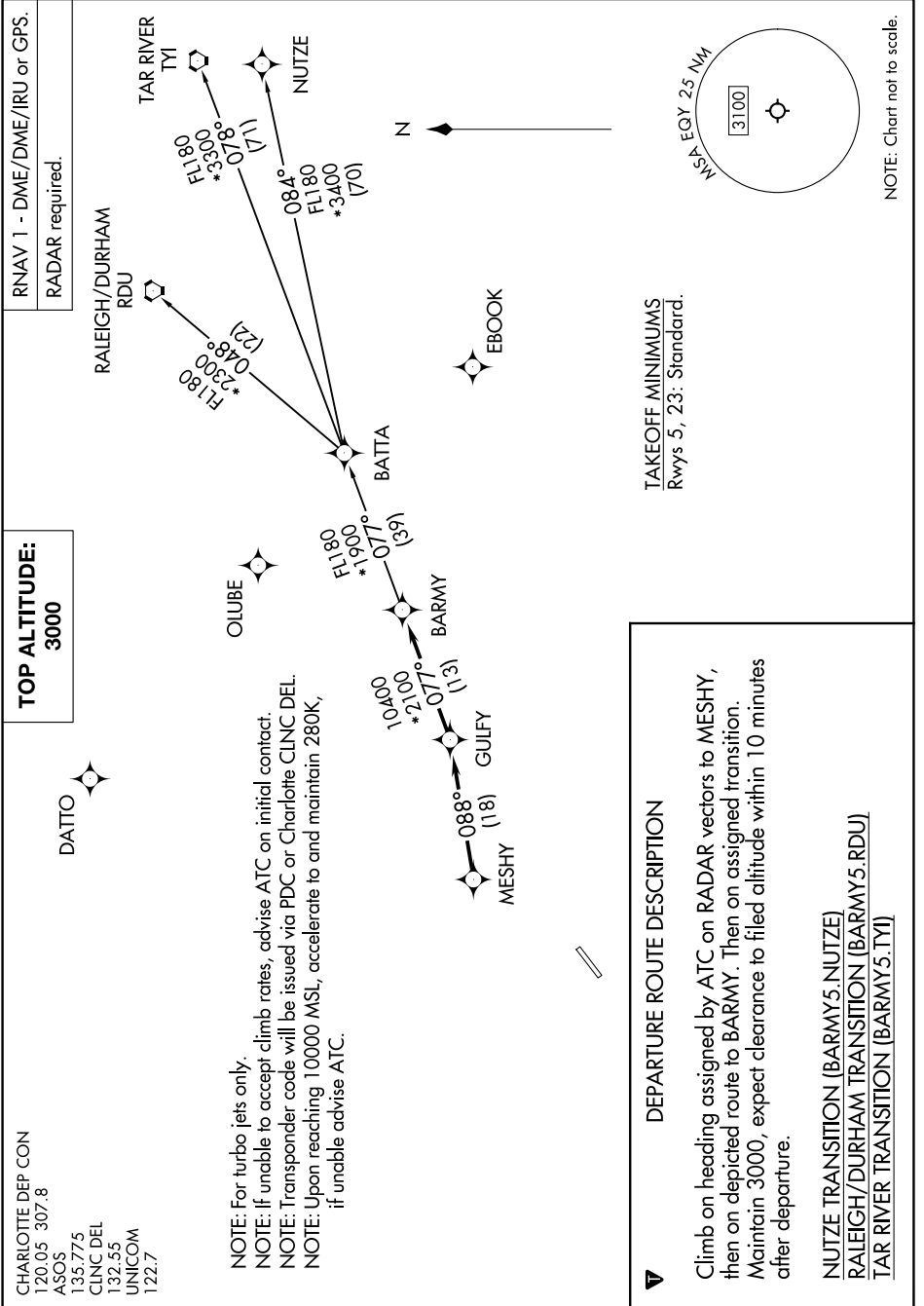


BARMY FIVE DEPARTURE (RNAV)

SE-2, 03 OCT 2024 to 31 OCT 2024



DEPARTURE ROUTE DESCRIPTION
Climb on heading assigned by ATC on RADAR vectors to MESHY, then on depicted route to BARMY. Then on assigned transition. Maintain 3000, expect clearance to filed altitude within 10 minutes after departure.
<u>NUTZE TRANSITION (BARMY5.NUTZE)</u>
<u>RALEIGH/DURHAM TRANSITION (BARMY5.RDU)</u>
<u>TAR RIVER TRANSITION (BARMY5.TYI)</u>

BARMY FIVE DEPARTURE (RNAV)

SE-2, 03 OCT 2024 to 31 OCT 2024