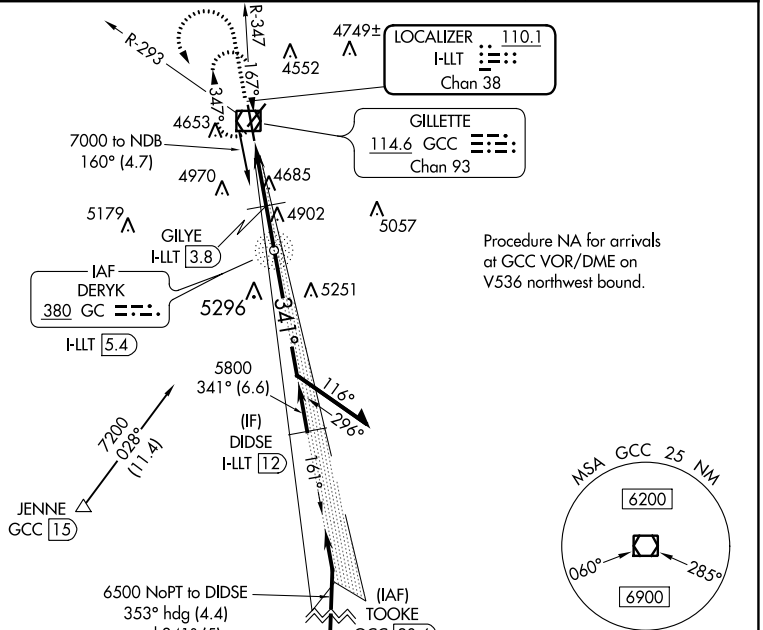


LOC/DME I-LLT <b>110.1</b> Chan <b>38</b>	APP CRS <b>341°</b>	Rwy Idg TDZE Apt Elev	<b>7500</b> <b>4365</b> <b>4365</b>
---	------------------------	-----------------------------	---

# ILS or LOC RWY 34

NORTHEAST WYOMING RGNL (GCC)

ADF or DME required.		MALSR	MISSED APPROACH: Climb to 5700 then climbing left turn to 7000 on heading 150° and on GCC VOR/DME R-293 to GCC VOR/DME and hold, continue climb-in-hold to 7000.
ASOS <b>124.175</b>	DENVER CENTER <b>135.6 363.025</b>	UNICOM <b>122.95</b>	CTAF <b>118.5</b>

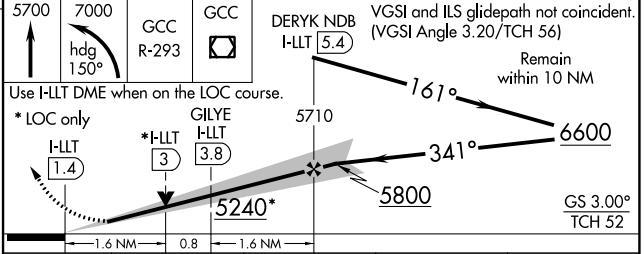
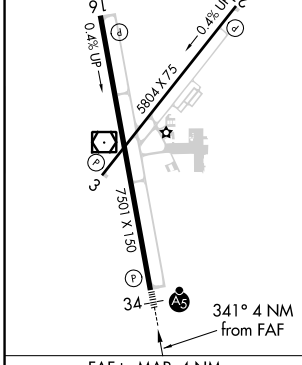


NW-1, 03 OCT 2024 to 31 OCT 2024

NW-1, 03 OCT 2024 to 31 OCT 2024

ELEV <b>4365</b>	<b>D</b>	TDZE <b>4365</b>
------------------	----------	------------------

HIRL Rwy 16-34  
REIL Rwy 3, 16, and 21  
MIRL Rwy 3-21



CATEGORY	A	B	C	D
S-ILS 34	4565-1/2 200 (200-1/2)			
S-LOC 34	5240-1/2 875 (900-1/2)	5240-3/4 875 (900-3/4)	5240-2	875 (900-2)
<b>C</b> CIRCLING	5240-1 1/4	875 (900-1 1/4)	5400-3	1035 (1100-3)
GILYE FIX MINIMUMS				
S-LOC 34	4940-1/2	575 (600-1/2)	4940-1 1/4	575 (600-1 1/4)
<b>C</b> CIRCLING	5040-1 675 (700-1)	5240-1 1/4 875 (900-1 1/4)	5400-3	1035 (1100-3)

FAF to MAP 4 NM					
Knots	60	90	120	150	180
Min:Sec	4:00	2:40	2:00	1:36	1:20

GILLETTE, WYOMING  
Amdt 4A 17JUN21

44°21'N-105°32'W

# NORTHEAST WYOMING RGNL (GCC)

## ILS or LOC RWY 34