

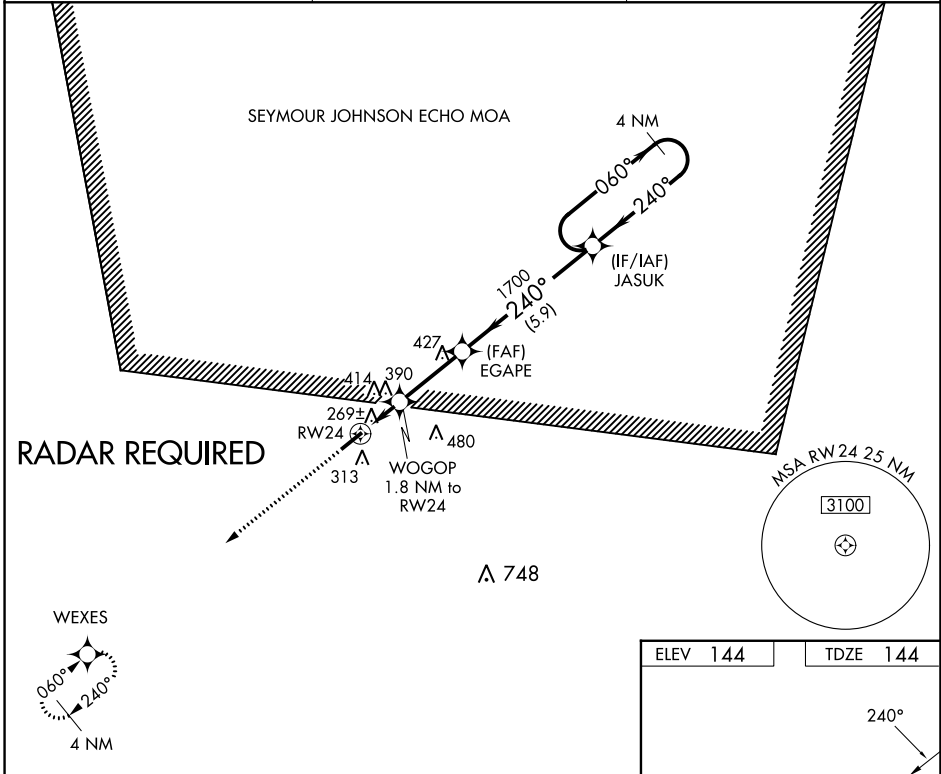
WAAS CH 99321 W24B	APP CRS 240°	Rwy Idg TDZE 144 Apr Elev 144	5002
--	------------------------	---	-------------

RNAV (GPS) Y RWY 24

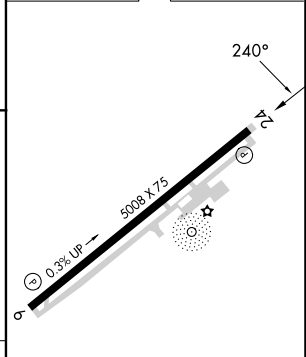
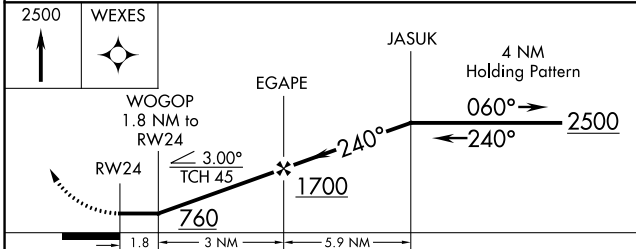
CLINTON-SAMPSON COUNTY (CTZ)

RNP APCH-GPS.	MISSED APPROACH: Climb to 2500 direct WEXES and hold.
<p>▼ Rwy 24 helicopter visibility reduction below 3/4 SM NA. When local altimeter setting not received, use Kenansville altimeter setting and increase all MDAs 60 feet and visibility Cats C and D 1/4 SM.</p>	

AWOS-3 119.125	FAYETTEVILLE APP CON 133.0 290.25	UNICOM 122.8 (CTAF) 0
--------------------------	---	---------------------------------



ELEV 144	TDZE 144
----------	----------



CATEGORY	A	B	C	D
LP MDA	560-1	416 (500-1)	560-1 1/8	416 (500-1 1/8)
RNAV MDA	640-1	496 (500-1)	640-1 3/8	496 (500-1 3/8)
CIRCLING	680-1 536 (600-1)	780-1 636 (700-1)	840-2 696 (700-2)	840-2 1/4 696 (700-2 1/4)



SE-2, 03 OCT 2024 to 31 OCT 2024

SE-2, 03 OCT 2024 to 31 OCT 2024