

WAAS CH 63112 W23A	APP CRS 230°	Rwy Idg TDZE Apt Elev	5001 124 125
--	------------------------	-----------------------------	---

RNAV (GPS) RWY 23

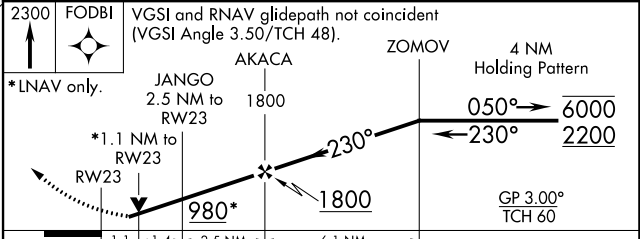
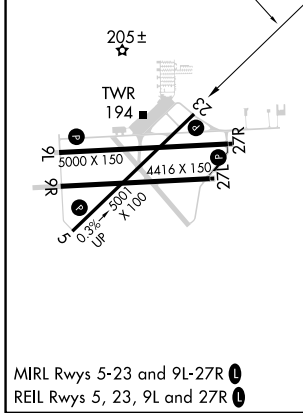
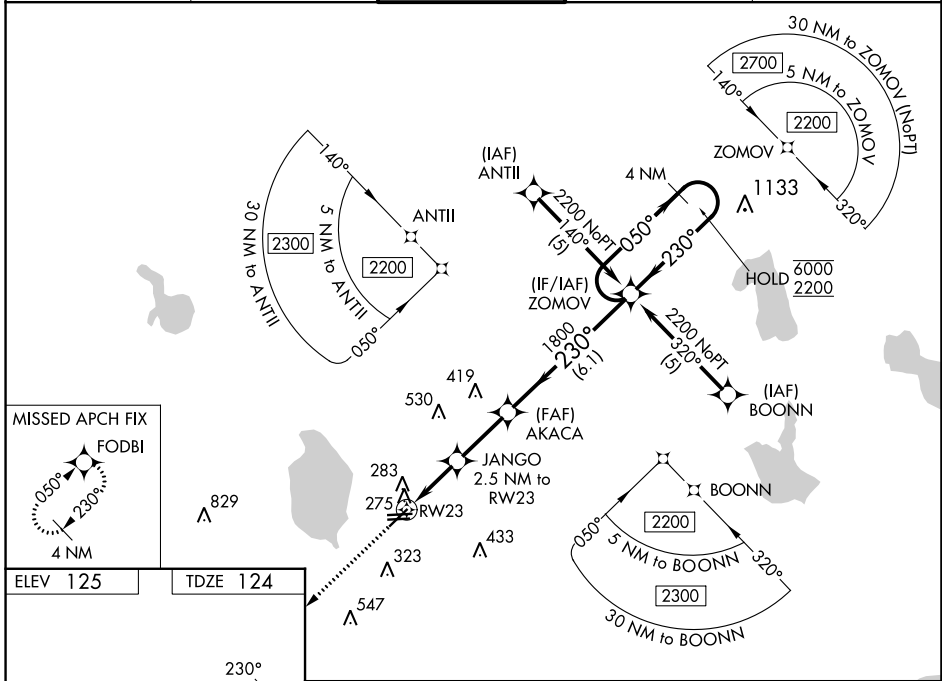
BARTOW EXEC (BOW)

RNP APCH.

⚠ Rwy 23 helicopter visibility reduction below ¼ SM NA. When local altimeter setting not received, use Tampa Intl altimeter setting and increase LPV DA to 560 feet, LNAV/VNAV DA to 681 feet and all MDA 120 feet, increase LPV all Cats visibility ¼ SM, LNAV/VNAV all Cats ½ SM, LNAV Cat C ¼ SM, Cat D ½ SM. For uncompensated Baro-VNAV systems, LNAV/VNAV NA below -15°C or above 54°C. VDP and Baro-VNAV NA when using Tampa Intl altimeter setting.

MISSED APPROACH: Climb to 2300 direct FODBI and hold.

AWOS-3 123.775	TAMPA APP CON 120.65 290.3	BARTOW TOWER ★ 121.20 (CTAF)	GND CON 121.9	UNICOM 122.95
--------------------------	--------------------------------------	---	-------------------------	-------------------------



CATEGORY	A	B	C	D
LPV DA	454-1 330 (400-1)			
LNAV/VNAV DA	575-1½ 451 (500-1½)			
LNAV MDA	580-1 456 (500-1)	580-1⅓ 456 (500-1⅓)	580-1½ 456 (500-1½)	

SE-3, 03 OCT 2024 to 31 OCT 2024

SE-3, 03 OCT 2024 to 31 OCT 2024