

WAAS CH <b>97342</b> <b>W18A</b>	APP CRS <b>175°</b>	Rwy Idg TDZE Apt Elev	<b>4986</b> <b>916</b> <b>925</b>
--	------------------------	-----------------------------	---

# RNAV (GPS) RWY 18

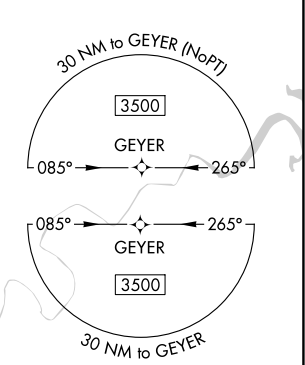
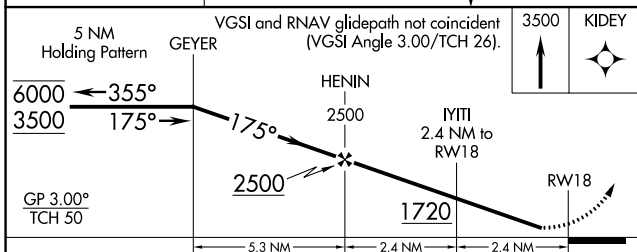
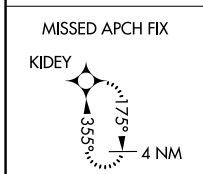
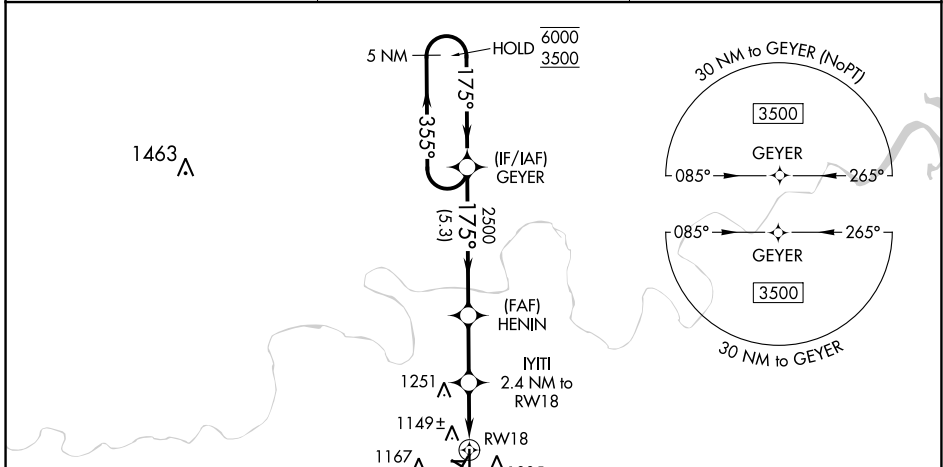
CUSHING MUNI (CUH)

RNP APCH-GPS.

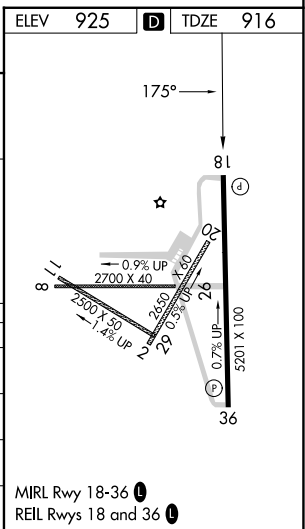
**⚠** Rwy 18 helicopter visibility reduction below  $\frac{3}{4}$  SM NA. For uncompensated Baro-VNAV systems, LNAV/VNAV NA below -16°C or above 54°C. Baro-VNAV and VDP NA when using CQB altimeter setting. When local altimeter setting not received, use CQB altimeter setting and increase LPV DA to 1207 feet and all visibilities  $\frac{1}{8}$  SM. Increase LNAV/VNAV DA to 1398 feet; increase all MDAs 60 feet and LNAV visibility Cat C/D  $\frac{1}{4}$  SM. Circling NA to Rwy 2, 8, 11, 20, 26, 29.

**MISSED APPROACH:** Climb to 3500 direct KIDEY and hold.

AWOS-3PT <b>118.25</b>	KANSAS CITY CENTER <b>127.8 319.1</b>	UNICOM <b>122.8 (CTAF)</b>
---------------------------	--	-------------------------------



CATEGORY	A	B	C	D
LPV DA		1166- $\frac{3}{4}$	250 (300- $\frac{3}{4}$ )	
LNAV/VNAV DA		1357-1 $\frac{1}{2}$	441 (500-1 $\frac{1}{2}$ )	
LNAV MDA	1400-1	484 (500-1)	1400-1 $\frac{3}{8}$	484 (500-1 $\frac{3}{8}$ )
<b>C</b> CIRCLING	1600-1	675 (700-1)	1600-2 675 (700-2)	1600-2 $\frac{1}{4}$ 675 (700-2 $\frac{1}{4}$ )



SC-1, 03 OCT 2024 to 31 OCT 2024

SC-1, 03 OCT 2024 to 31 OCT 2024