

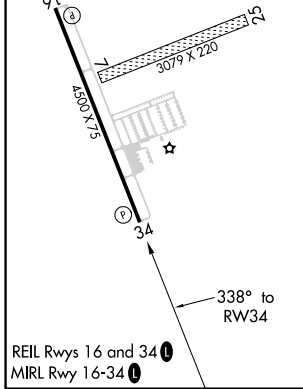
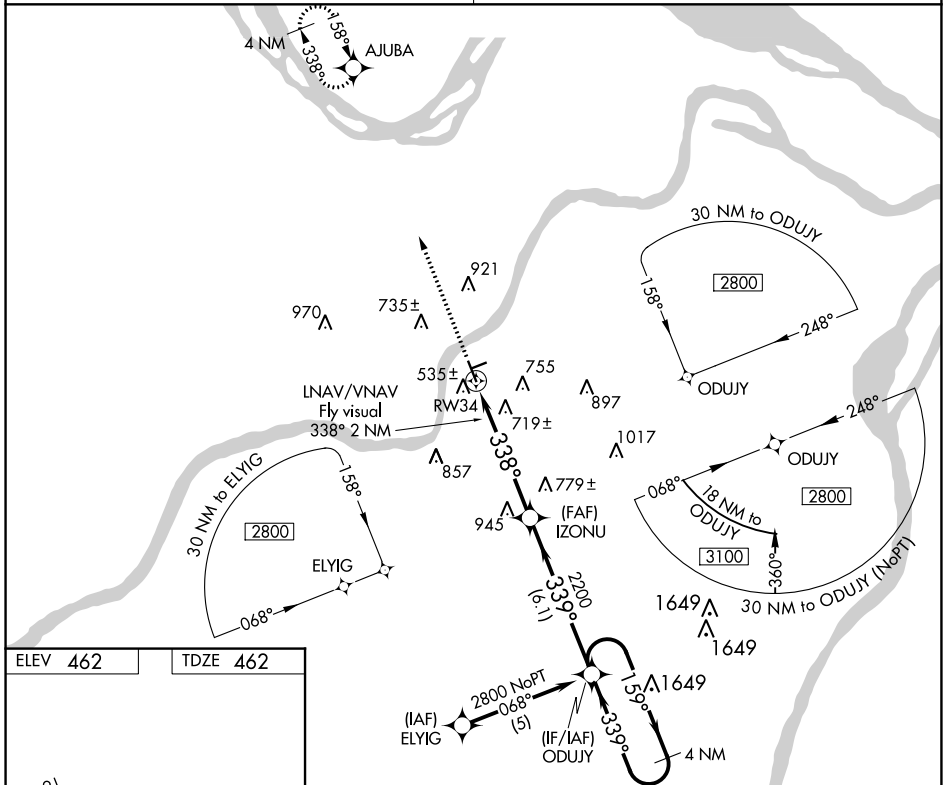
WAAS CH 93905 W34A	APP CRS 338°	Rwy Idg TDZE 462 Apt Elev 462	4500
--	------------------------	---	-------------

RNAV (GPS) RWY 34

CREVE COEUR (1H0)

RNP APCH.	MISSED APPROACH: Climb to 2700 direct AJUBA and hold.
<p>▼ Use St Louis Lambert Intl altimeter setting. Baro-VNAV NA. Circling Rwy 16 NA at night.</p> <p>▲ NA Circling NA to Rwy 7 and 25. Rwy 34 helicopter visibility reduction below ¾ SM NA.</p>	

ST. LOUIS APP CON 126.5 254.3	UNICOM 122.8 (CTAF)
---	-------------------------------



2700	AJUBA	VGSI and RNAV glidepath not coincident. (VGSI Angle 3.00/TCH 43).	4 NM Holding Pattern
	IZONU		ODUJY
	RW34		2800
	LNNAV/VNAV Fly visual 338° 2 NM		GP 3.00° TCH 30
		5.3 NM	6.1 NM

CATEGORY	A	B	C	D
LPV DA	809-1¼ 347 (400-1¼)			NA
LNNAV/VNAV DA	1131-2 669 (700-2)			NA
LNNAV MDA	1080-1 618 (700-1)			NA
CIRCLING	1080-1 618 (700-1)	1120-1 658 (700-1)		NA

NC-3, 03 OCT 2024 to 31 OCT 2024

NC-3, 03 OCT 2024 to 31 OCT 2024