

APP CRS	Rwy Idg	<b>5000</b>
<b>121°</b>	TDZE	<b>1086</b>
	Apt Elev	<b>1086</b>

# RNAV (GPS) RWY 12

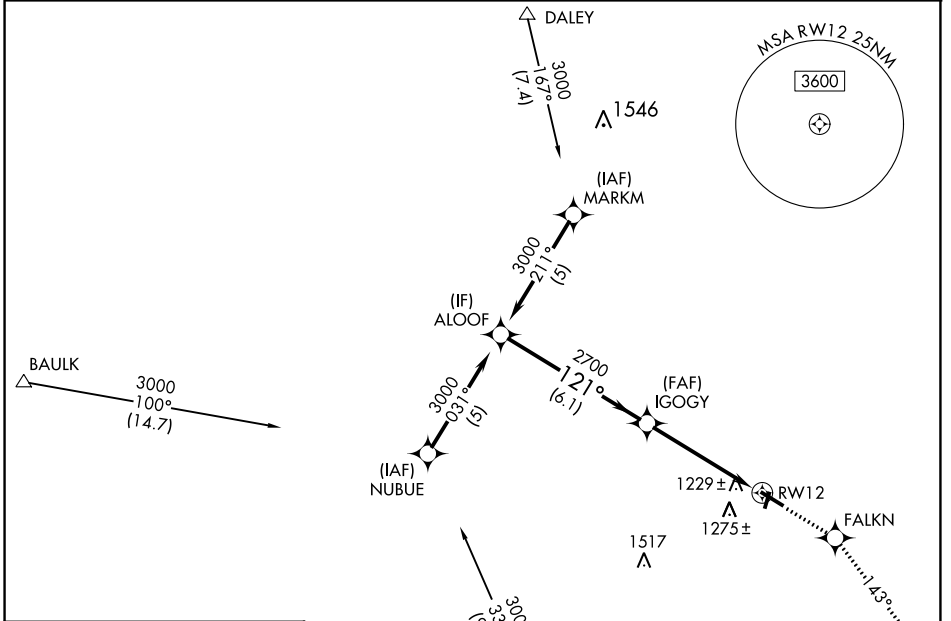
MONROE MUNI (EFT)

RNP APCH-GPS.

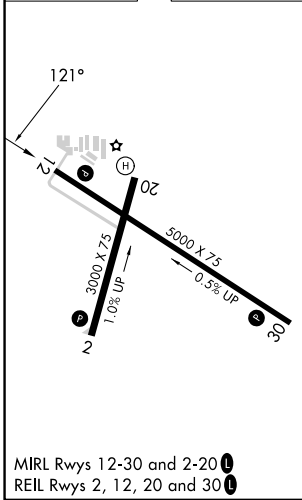
**V** VDP NA when using Altimeter setting. When local altimeter setting not received, use Altimeter setting and increase all MDA 100 feet, increase LNAV Cat C/D and Circling Cat C visibility ¼ mile. Rwy 12 helicopter visibility reduction below ¾ SM NA. Circling to Rwy 2-20 NA at night.

**MISSED APPROACH:**  
Climb to 3000 direct FALKN and on track 143° to DAVIS and hold.

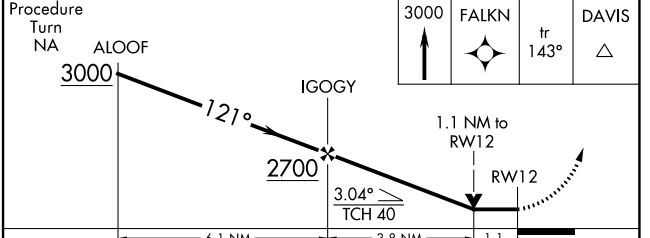
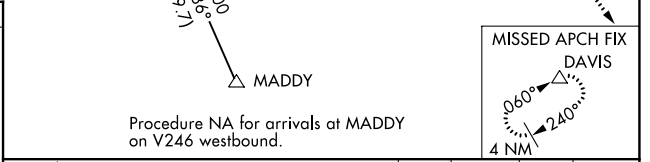
AWOS-3 <b>118.375</b>	ROCKFORD APP CON <b>126.0 327.0</b>	UNICOM <b>123.05 (CTAF) 0</b>
--------------------------	--	----------------------------------



ELEV 1086	TDZE 1086
-----------	-----------



MONROE, WISCONSIN  
Orig-B 20MAY21



CATEGORY	A	B	C	D
LNAV MDA	1480-1 394 (400-1)			1480-1¼ 394 (400-1½)
CIRCLING	1540-1 454 (500-1)	1640-1 554 (600-1)	1640-1½ 554 (600-1½)	1640-2 554 (600-2)

42°37'N-89°35'W

# RNAV (GPS) RWY 12

EC-3, 03 OCT 2024 to 31 OCT 2024

EC-3, 03 OCT 2024 to 31 OCT 2024