

APP CRS 012°	Rwy Idg 5004
	TDZE 278
	Apt Elev 278

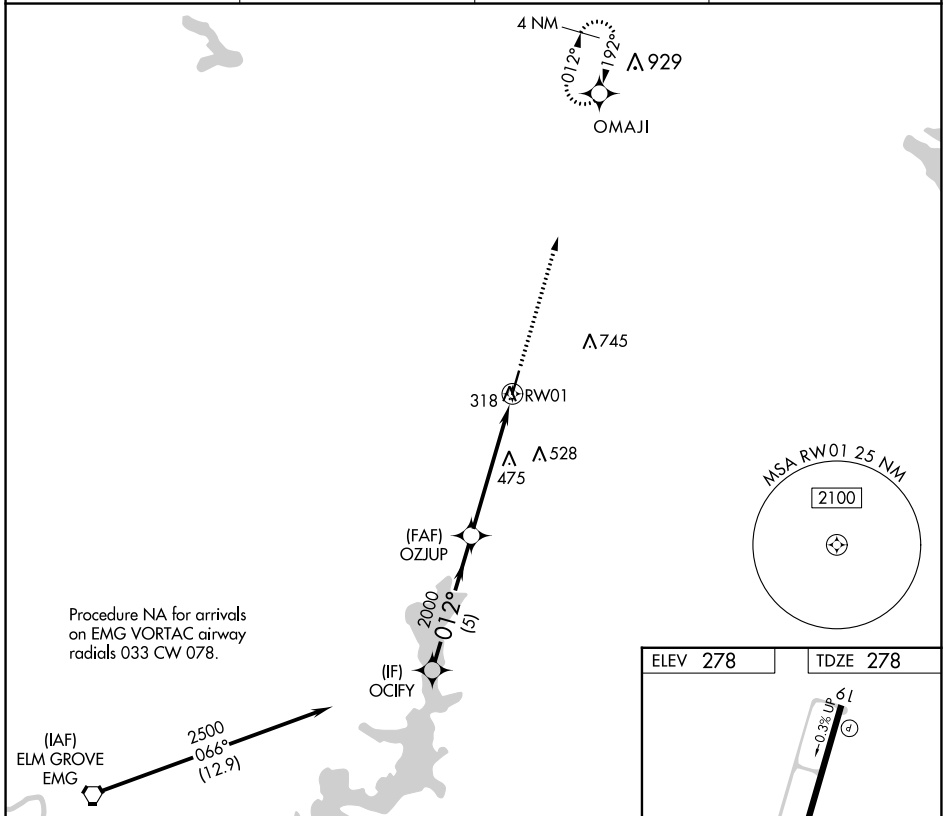
RNAV (GPS) RWY 1

MINDEN (MNE)

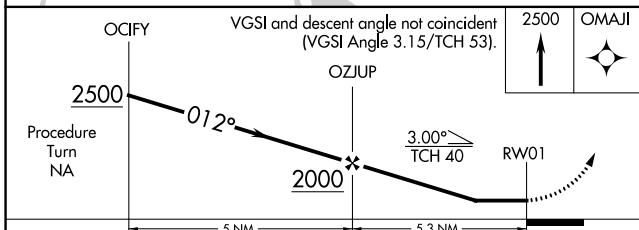
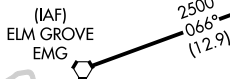
⚠ When VGSI inop, procedure NA at night. DME/DME RNP-0.3 NA. Helicopter visibility reduction below 1 SM NA. When local altimeter setting not received, use Barksdale AFB altimeter setting; increase all MDA 80 feet, increase LNAV visibility Cats C/D ½ SM and Circling visibility Cats C/D ¼ SM.

MISSED APPROACH:
Climb to 2500 direct OMAJI and hold.

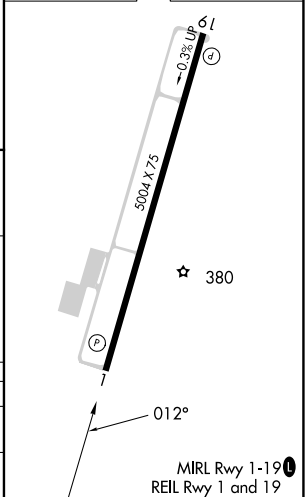
AWOS-3PT 119,325	SHREVEPORT APP CON 123.75 360.725	GCO 135.075	UNICOM 122.8 (CTAF) 📻
----------------------------	---	-----------------------	--



Procedure NA for arrivals on EMG VORTAC airway radials 033 CW 078.



ELEV 278	TDZE 278
----------	----------



CATEGORY	A	B	C	D
LNAV MDA	780-1	502 (600-1)	780-1 ³ / ₈	502 (600-1 ³ / ₈)
CIRCLING	780-1 502 (600-1)	820-1 542 (600-1)	1060-2 ¹ / ₄ 782 (800-2 ¹ / ₄)	1060-2 ¹ / ₂ 782 (800-2 ¹ / ₂)

SC-4, 03 OCT 2024 to 31 OCT 2024

SC-4, 03 OCT 2024 to 31 OCT 2024