

WAAS CH 81935 W26A	APP CRS 259°	Rwy Idg TDZE Apt Elev	4051 696 698
--	------------------------	-----------------------------	---

RNAV (GPS) RWY 26

LAURENS COUNTY (LUX)

RNP APCH-GPS.

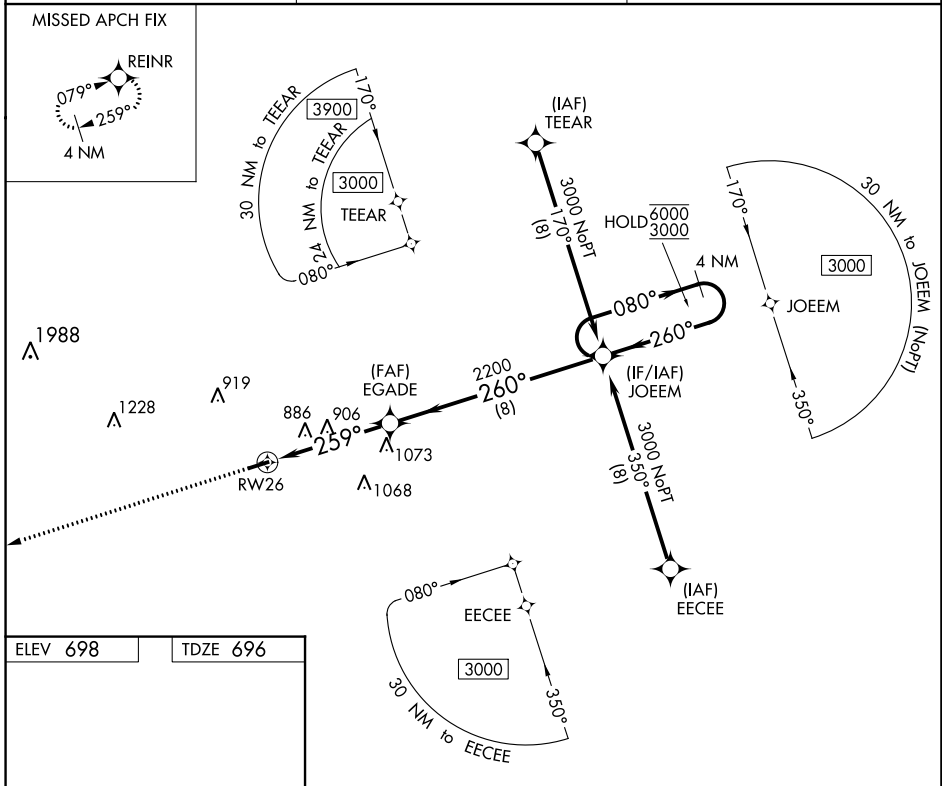
▼ Rwy 26 helicopter visibility reduction below 3/4 SM NA.

MISSED APPROACH: Climb to 3000 direct REINR and hold.

AWOS-3
123.975

GREER APP CON ★
120.6 350.2

UNICOM
122.8 (CTAF) 0



ELEV 698	TDZE 696
----------	----------

REIL Rws 8 and 26 0
MIRL Rwy 8-26 0

3000	REINR	VGSI and descent angles not coincident (VGSI Angle 3.25/TCH 53).	4 NM Holding Pattern	
		EGADDE	JOEEM	
		2200	6000 / 3000	
1.2	3.4 NM	8 NM		
CATEGORY	A	B	C	D
LP MDA	1160-1	464 (500-1)		NA
LNAV MDA	1160-1	464 (500-1)		NA
<input checked="" type="checkbox"/> CIRCLING	1200-1	502 (600-1)		NA

SE-2, 03 OCT 2024 to 31 OCT 2024

SE-2, 03 OCT 2024 to 31 OCT 2024