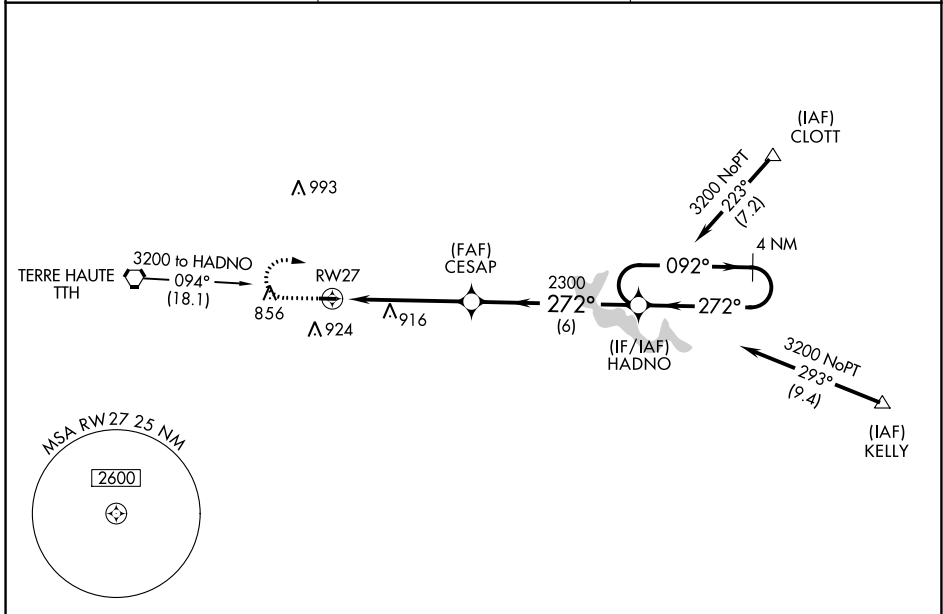


APP CRS 272°	Rwy Idg TDZE Apt Elev	2499 645 645
------------------------	-----------------------------	---

RNAV (GPS) RWY 27

BRAZIL CLAY COUNTY (ØI2)

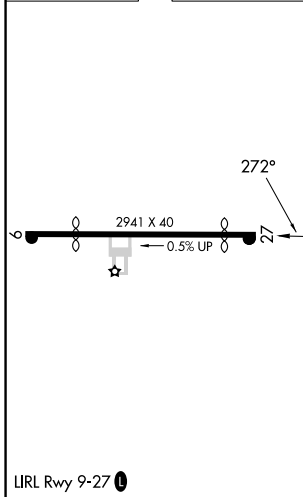
RNP APCH - GPS.		MISSED APPROACH: Climb to 2300 then dimbing right turn to 3200 direct HADNO and hold.	
▼ Use HUF altimeter setting. Procedure NA at night. ▲ NA Helicopter visibility reduction below 1 SM NA.		HUF ASOS 127.5	HULMAN APP CON 125.45 339.8
		UNICOM 122.8 (CTAF) Ø	



EC-2, 03 OCT 2024 to 31 OCT 2024

EC-2, 03 OCT 2024 to 31 OCT 2024

ELEV 645	TDZE 645
----------	----------



2300 3200 HADNO ↑ ↪ ✧			
RWY 27 CESAP HADNO 4 NM Holding Pattern ↙ 272° ↘ 092° → 3200 ↖ 272°			
5 NM ≤ 3.07% TCH 40		6 NM	
CATEGORY	A	B	C D
LNAV MDA	1240-1 595 (600-1)	NA	
CIRCLING	1240-1 595 (600-1)	NA	