

WAAS CH 82433 W06A	APP CRS 062°	Rwy ldg 4106 TDZE 1079 Apt Elev 1084
--	------------------------	---

RNAV (GPS) RWY 6

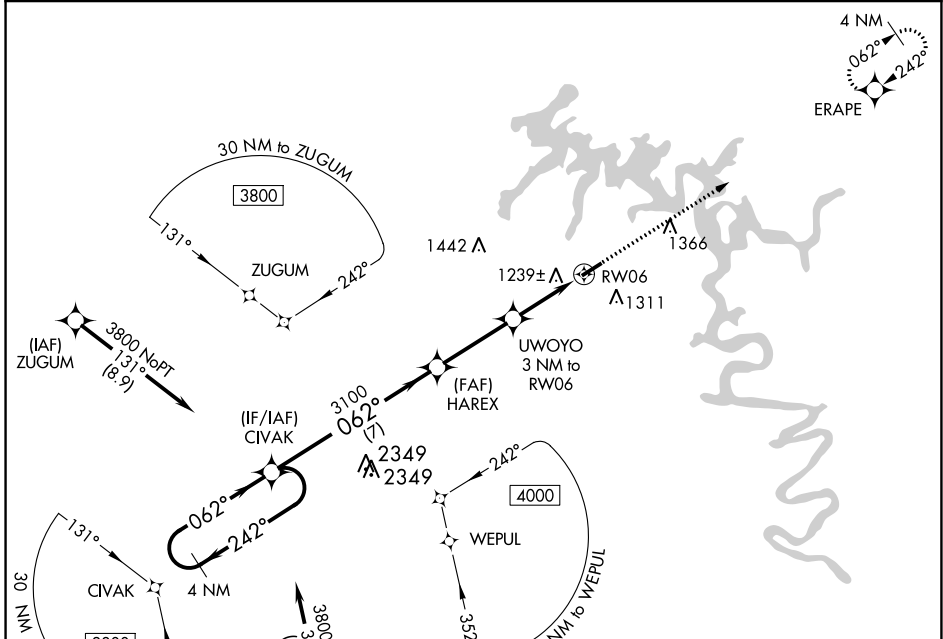
SMITHVILLE MUNI (ØA3)

RNP APCH.

Baro-VNAV NA. Procedure NA at night. Rwy 6 helicopter visibility reduction below 1 SM NA. Use Sparta altimeter setting; when not received, use Tullahoma altimeter setting and increase LPV DA to 1486 feet and all visibilities $\frac{1}{8}$ SM, increase LNAV/VNAV DA to 1645 feet and all visibilities $\frac{1}{4}$ SM, increase all MDA 60 feet and LNAV visibility Cat C $\frac{1}{4}$ SM.

MISSED APPROACH: Climb to 3800 direct ERAPE and hold.

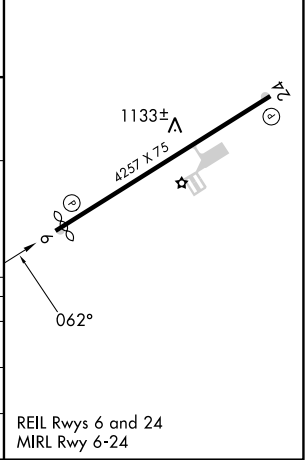
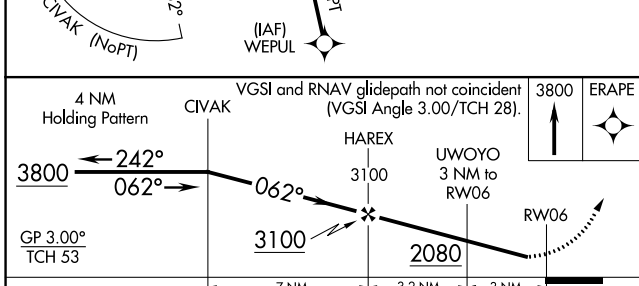
SRB AWOS-3 128.25	MEMPHIS CENTER 132.9 290.3	UNICOM 122.8 (CTAF)
-----------------------------	--------------------------------------	-------------------------------



SE-1, 03 OCT 2024 to 31 OCT 2024

SE-1, 03 OCT 2024 to 31 OCT 2024

ELEV 1084	D	TDZE 1079
-----------	----------	-----------



CATEGORY	A	B	C	D
LPV DA	1433-1	354 (400-1)		NA
LNAV/VNAV DA	1592-1 $\frac{3}{8}$	513 (600-1 $\frac{3}{8}$)		NA
LNAV MDA	1580-1	501 (500-1)	1580-1 $\frac{3}{8}$ 501 (500-1 $\frac{3}{8}$)	NA

REIL Rwy 6 and 24
MIRL Rwy 6-24