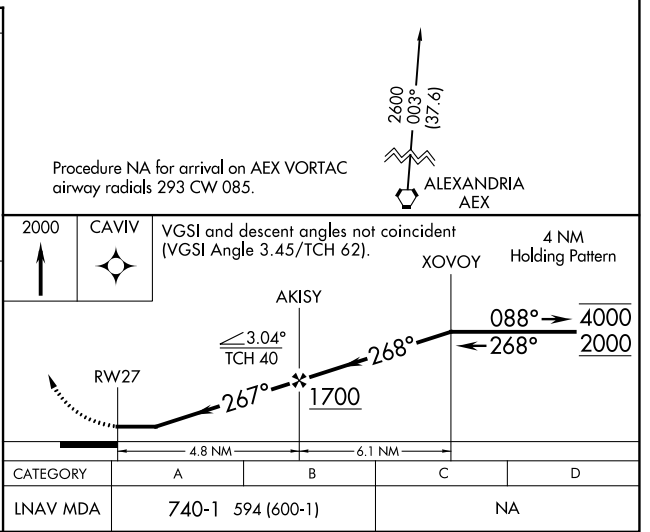
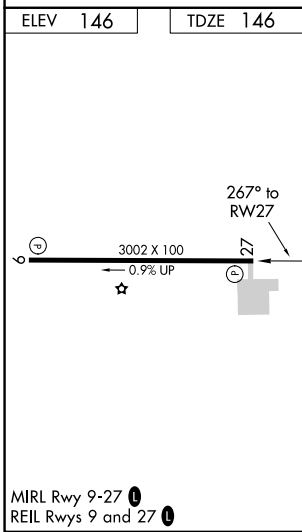
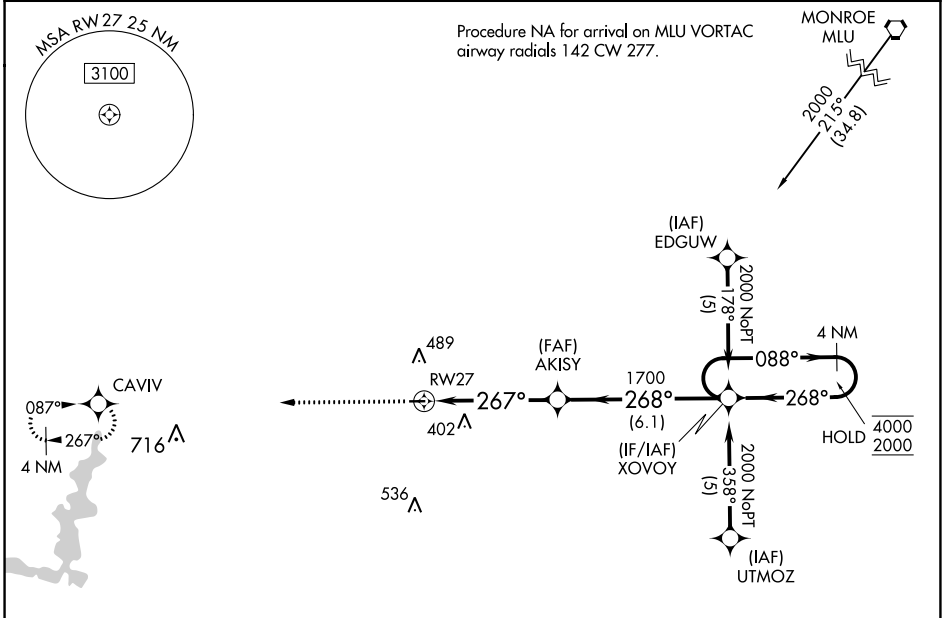


APP CRS	Rwy Idg	<b>3002</b>
<b>267°</b>	TDZE	<b>146</b>
	Apt Elev	<b>146</b>

# RNAV (GPS) RWY 27

DAVID G JOYCE (ØR5)

RNP APCH - GPS.		MISSED APPROACH: Climb to 2000 direct CAVIV and hold.
<p>▼ Rwy 27 helicopter visibility reduction below 1 SM NA. Use Alexandria Intl altimeter setting, when not received use Esler Rgnl altimeter setting. Procedure NA at night.</p> <p>▲ NA</p>		
AEX ASOS <b>123.975</b>	POLK APP CON <b>125.4 302.2</b>	UNICOM <b>122.7 (CTAF) 0</b>



SC-4, 03 OCT 2024 to 31 OCT 2024

SC-4, 03 OCT 2024 to 31 OCT 2024