

WAAS CH <b>90424</b> <b>W22A</b>	APP CRS <b>220°</b>	Rwy Idg <b>4401</b> TDZE <b>35</b> Apt Elev <b>35</b>
--	------------------------	---

# RNAV (GPS) RWY 22

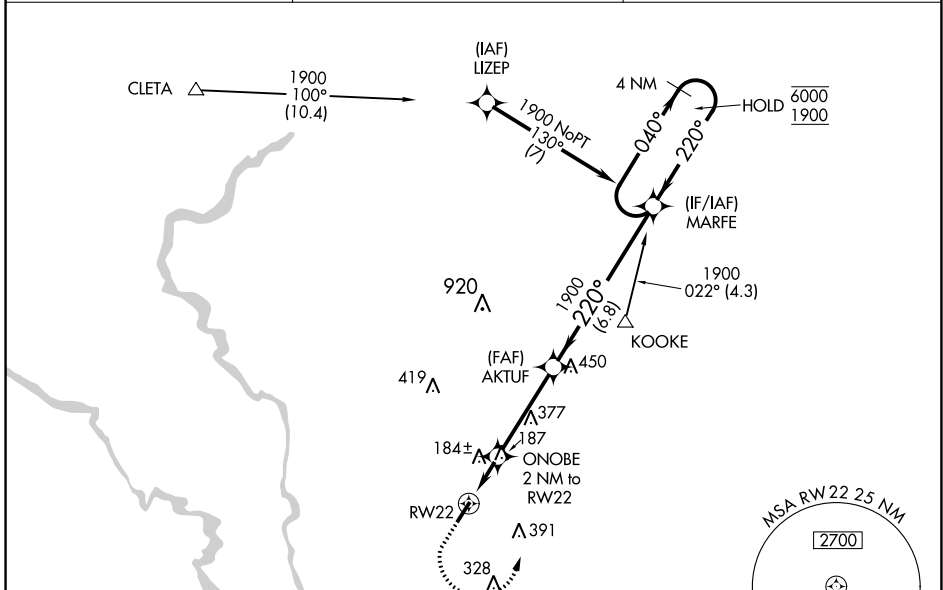
CONWAY-HORRY COUNTY (HYW)

RNP APCH.

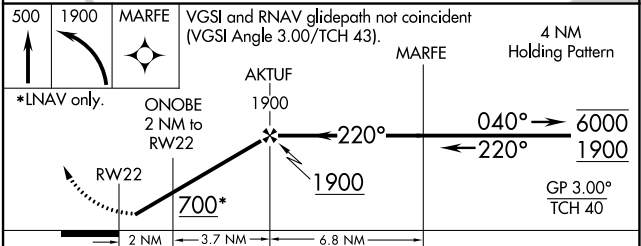
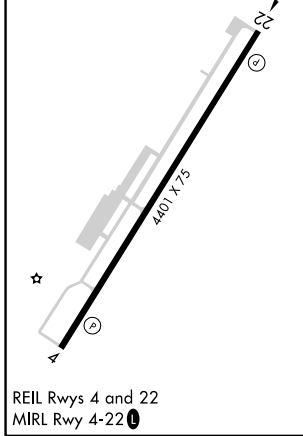
**⚠** Rwy 22 helicopter visibility reduction below 1 SM NA. Straight-in Rwy 22 at night, operational VGSI required, remain on or above VGSI glidepath until threshold. For uncompensated Baro-VNAV systems, LNAV/VNAV NA below -15°C or above 54°C.

MISSED APPROACH: Climb to 500 then climbing left turn to 1900 direct MARFE and hold.

AWOS-3 <b>119.525</b>	MYRTLE BEACH APP CON★ <b>127.4 257.95</b>	UNICOM <b>122.7 (CTAF)</b> <b>📶</b>
--------------------------	--	--



ELEV <b>35</b>	TDZE <b>35</b>
----------------	----------------



CATEGORY	A	B	C	D
LPV DA	285-1		250 (300-1)	
LNAV/VNAV DA	438-1 <sup>1</sup> / <sub>8</sub>		403 (500-1 <sup>1</sup> / <sub>8</sub> )	
LNAV MDA	440-1	405 (500-1)	440-1 <sup>1</sup> / <sub>8</sub>	405 (500-1 <sup>1</sup> / <sub>8</sub> )
CIRCLING	520-1	540-1	700-1 <sup>3</sup> / <sub>4</sub>	700-2
	485 (500-1)	505 (600-1)	665 (700-1 <sup>3</sup> / <sub>4</sub> )	665 (700-2)

SE-2, 03 OCT 2024 to 31 OCT 2024

SE-2, 03 OCT 2024 to 31 OCT 2024