

MEADE, KANSAS

AL-6286 (FAA)

23166

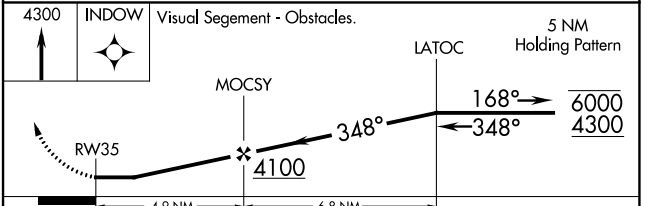
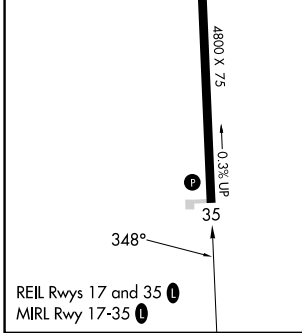
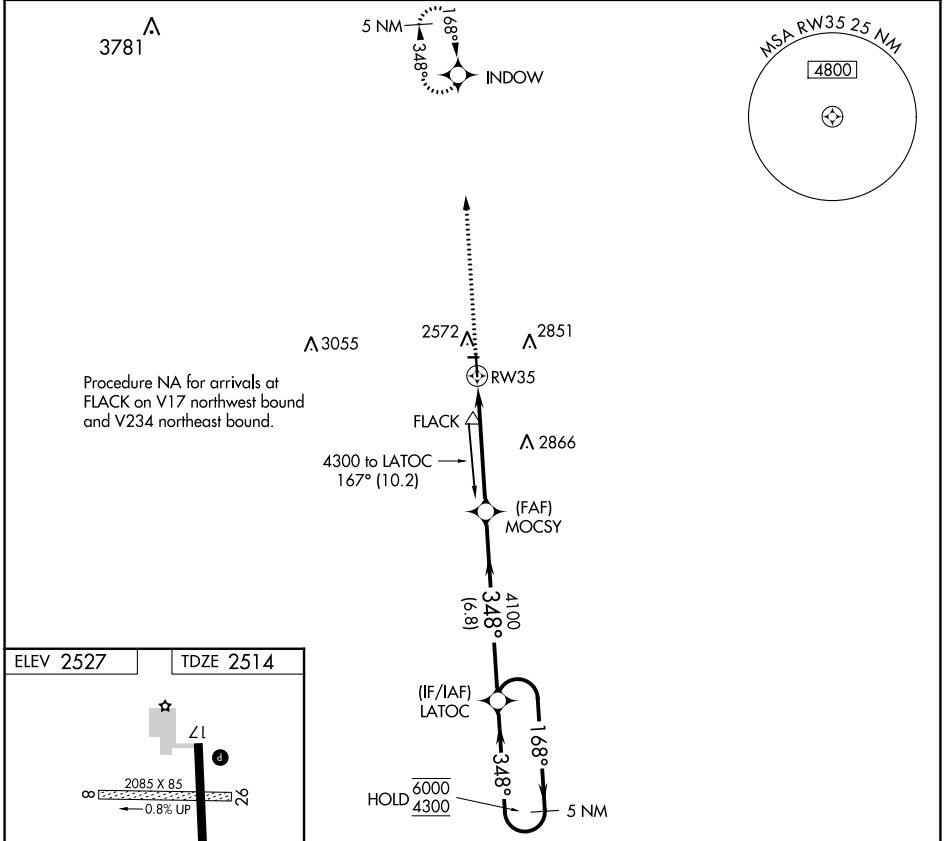
APP CRS	Rwy Idg	4800
348°	TDZE	2514
	Apt Elev	2527

RNAV (GPS) RWY 35

MEADE MUNI (MEJ)

RNP APCH	MISSED APPROACH: Climb to 4300 direct INDOW and hold.
<p>▼ Circling NA to Rws 8 and 26. Rwy 35 helicopter visibility reduction below 1 SM NA. When local altimeter setting not received, use liberal altimeter setting and increase all MDAs 140 feet.</p> <p>▲ NA</p>	

AWOS-3PT 119.425	KANSAS CITY CENTER 134.0 257.625	UNICOM 122.8 (CTAF) 0
----------------------------	--	---------------------------------



CATEGORY	A	B	C	D
LNAV MDA	3000-1	486 (500-1)	NA	
CIRCLING	3000-1 473 (500-1)	3160-1 633 (700-1)	NA	

MEADE, KANSAS
Orig-D 20MAY21

37°17'N-100°21'W

MEADE MUNI (MEJ) RNAV (GPS) RWY 35

NC-2, 03 OCT 2024 to 31 OCT 2024

NC-2, 03 OCT 2024 to 31 OCT 2024