

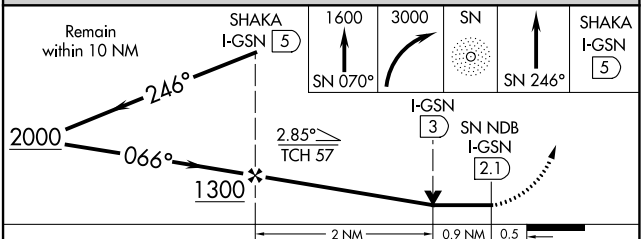
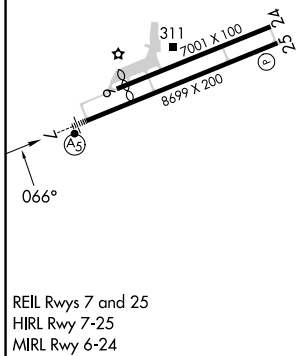
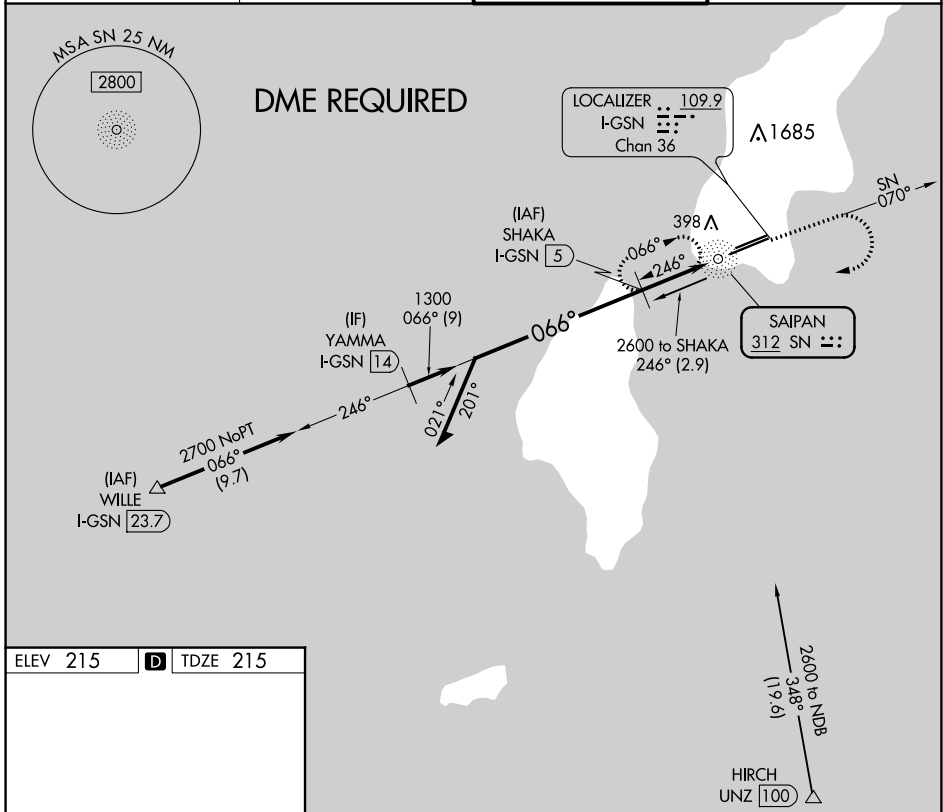
NDB SN 312	APP CRS 066°	Rwy ldg TDZE Apt Elev	8010 215 215
----------------------	------------------------	-----------------------------	---

NDB Z RWY 7

FRANCISCO C ADA/SAIPAN INTL (GSN)(PGSN)

Circling NA north of Rwy 6-24. DME required.	MALS R	MISSED APPROACH: Climb to 1600 on SN NDB bearing 070° then climbing right turn to 3000 direct SN NDB then on SN NDB bearing 246° to SHAKA/I-GSN 5 DME and hold.
		MALS R

ATIS 127.2	GUAM CERAP 118.4 290.5	SAIPAN TOWER 125.7 256.9	GND CON 121.8
----------------------	----------------------------------	------------------------------------	-------------------------



CATEGORY	A	B	C	D
S-7	760-3/4	545 (600-3/4)	760-1 1/8	545 (600-1 1/8)
C CIRCLING	760-1	545 (600-1)	760-1 1/8	780-2
			545 (600-1 1/8)	565 (600-2)

PAC, 05 SEP 2024 to 31 OCT 2024

PAC, 05 SEP 2024 to 31 OCT 2024