

APP CRS	Rwy Idg	8000
253°	TDZE	6540
	Apt Elev	6547


RNAV (RNP) X RWY 25

EAGLE COUNTY RGNL (EGE)

RNP AR APCH-GPS, RF, MIN RNP 0.13. Authorization required. Missed approach requires RNP <1.00.

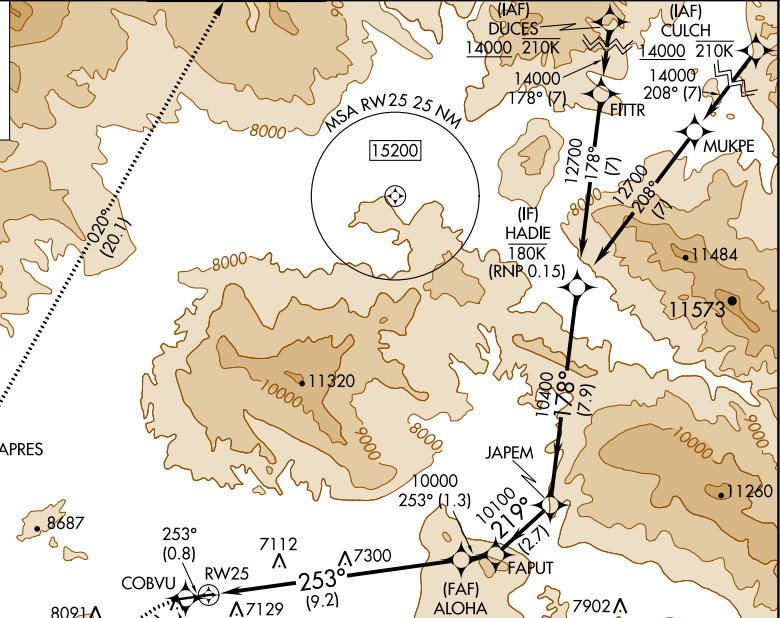
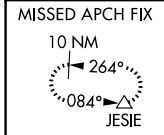
When local climeter setting not received, procedure NA. For uncompensated Baro-VNAV systems, procedure NA below -27°C or above 33°C. For inop ALS increase RNP 0.13 all visibilities to 1% SM.

MALSR

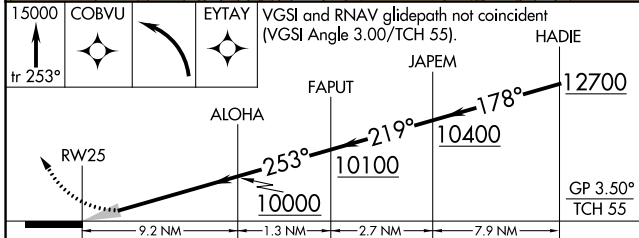


MISSED APPROACH: (Do not exceed 185K until HARNA) Climb to 15000 on the RNAV missed approach route to JESIE and hold.
*Missed approach requires minimum climb of 269 feet per NM to 8700.

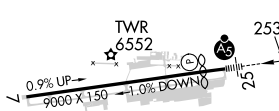
ATIS	DENVER CENTER	EAGLE TOWER *	GND CON	CLNC DEL	DENVER CLNC DEL
135.575	128.65 282.2	119.8 (CTAF)	121.8	124.75	124.75 (When tower closed)



ELEV 6547	TDZE 6540
-----------	-----------



tr 253°	COBVU	EYTAY
---------	-------	-------



CATEGORY	A	B	C	D
RNP 0.13 DA*	NA	6937-5/8	397 (400-5/8)	
RNP 0.13 DA	NA	7204-1 1/2	664 (700-1 1/2)	

AUTHORIZATION REQUIRED

HIRL Rwy 7-25
REIL Rwy 7

SW-1, 03 OCT 2024 to 31 OCT 2024

SW-1, 03 OCT 2024 to 31 OCT 2024