

WAAS CH <b>40033</b> <b>W08A</b>	APP CRS <b>084°</b>	Rwy Idg TDZE <b>170</b> Apt Elev <b>176</b>	<b>5004</b>
--	------------------------	---	-------------

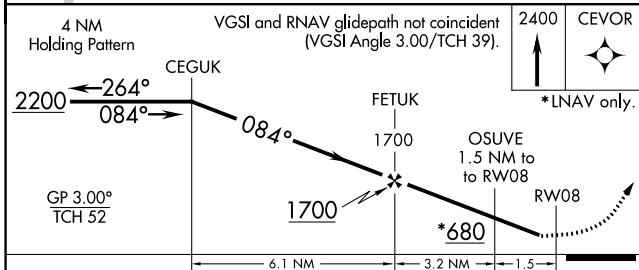
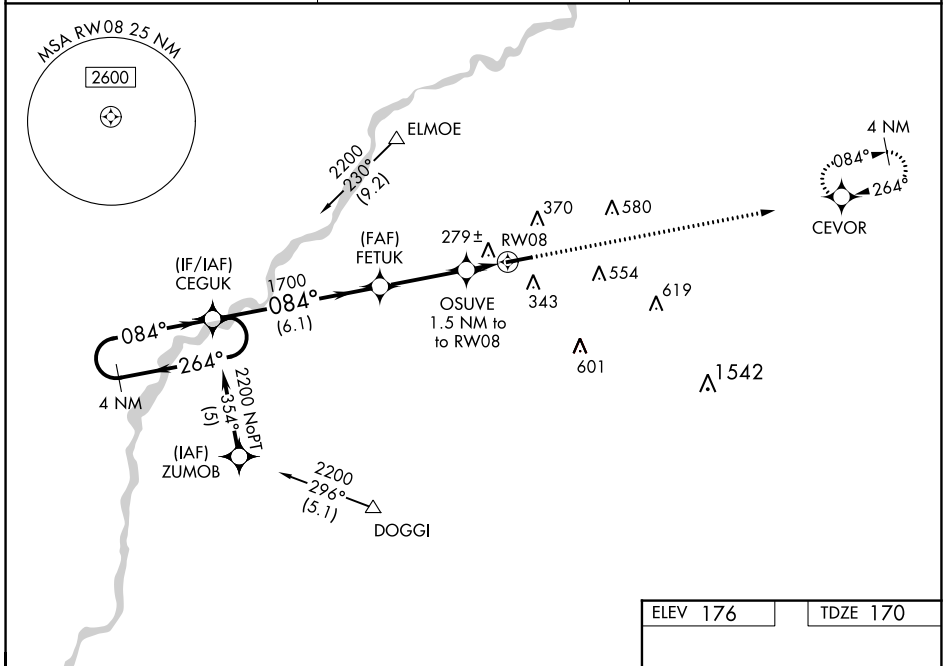
# RNAV (GPS) RWY 8

CAMILLA-MITCHELL COUNTY (CXU)

**⚠** Baro-VNAV NA when using Albany altimeter setting. For uncompensated Baro-VNAV systems, LNAV/VNAV NA below -1.5°C (5°F) or above 54°C (130°F). DME/DME RNP-0.3 NA. When local altimeter setting not received, use Albany altimeter setting and increase LPV DA to 513 feet; increase LNAV/VNAV DA to 623 feet; increase all MDAs 60 feet and LNAV Cats C/D and Circling Cat D visibility ¼ SM.

**MISSED APPROACH:**  
Climb to 2400 direct CEVOR and hold.

AWOS-3T <b>118.675</b>	JACKSONVILLE CENTER <b>125.75 363.075</b>	UNICOM <b>122.8 (CTAF)</b> <b>📻</b>
---------------------------	--	--



ELEV 176	TDZE 170
----------	----------

REIL Rwy 8 and 26 **📻**  
MIRL Rwy 8-26 **📻**

CATEGORY	A	B	C	D
LPV DA		465-1	295 (300-1)	
LNAV/VNAV DA		575-1 3/8	405 (400-1 3/8)	
LNAV MDA		540-1	370 (400-1)	
CIRCLING	720-1 544 (600-1)	760-1 584 (600-1)	920-2 1/4 744 (800-2 1/4)	940-2 1/2 764 (800-2 1/2)

SE-4, 03 OCT 2024 to 31 OCT 2024

SE-4, 03 OCT 2024 to 31 OCT 2024