

# GARLAND FIVE DEPARTURE

(CONTINUED ON FOLLOWING PAGE)

SC-2, 03 OCT 2024 to 31 OCT 2024

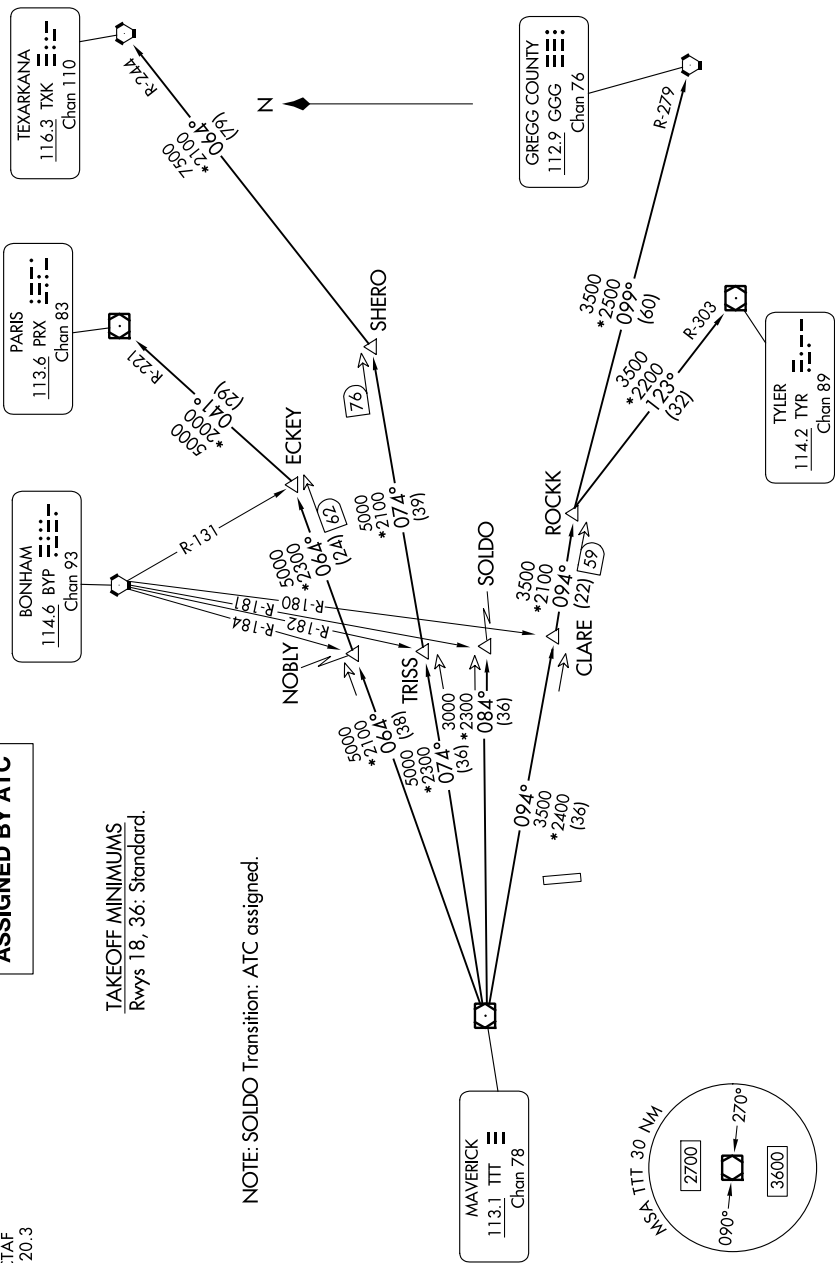
REGIONAL DEP CON  
125.2 343.65  
CTAF  
120.3

**TOP ALTITUDE:  
ASSIGNED BY ATC**

TAKEOFF MINIMUMS  
Rvys 18, 36: Standard.

NOTE: SOLDLO Transition: ATC assigned.

RADAR and DME required.



SC-2, 03 OCT 2024 to 31 OCT 2024

NOTE: Chart not to scale.

# GARLAND FIVE DEPARTURE