

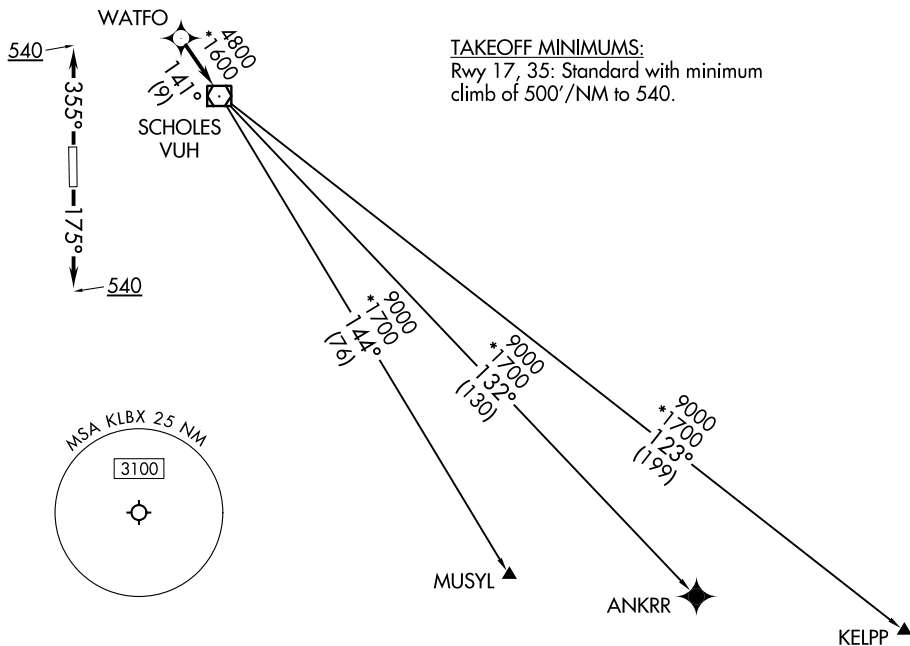
# WATFO SIX DEPARTURE (RNAV)

ASOS  
119.925  
CTAF  
123.0  
CLNC DEL  
125.2  
HOUSTON DEP CON  
134.45 284.0

RNAV 1 - DME/DME/IRU or GPS.

RADAR required.

**TOP ALTITUDE:  
ASSIGNED BY ATC**



TAKEOFF MINIMUMS:

Rwy 17, 35: Standard with minimum climb of 500'/NM to 540.

SC-5, 03 OCT 2024 to 31 OCT 2024

SC-5, 03 OCT 2024 to 31 OCT 2024

NOTE: Chart not to scale.



## DEPARTURE ROUTE DESCRIPTION

TAKEOFF RUNWAY 17: Climb on heading 175° to 540, for RADAR vectors to WATFO, thence. . . .

TAKEOFF RUNWAY 35: Climb on heading 355° to 540, for RADAR vectors to WATFO, thence. . . .

. . . on track 141° to VUH VOR/DME, then on (transition). Maintain ATC assigned altitude. Expect filed altitude 10 minutes after departure.

ANKRR TRANSITION (WATFO6.ANKRR)

KELPP TRANSITION (WATFO6.KELPP)

MUSYL TRANSITION (WATFO6.MUSYL)

# WATFO SIX DEPARTURE (RNAV)

(WATFO6.WATFO) 10AUG23