

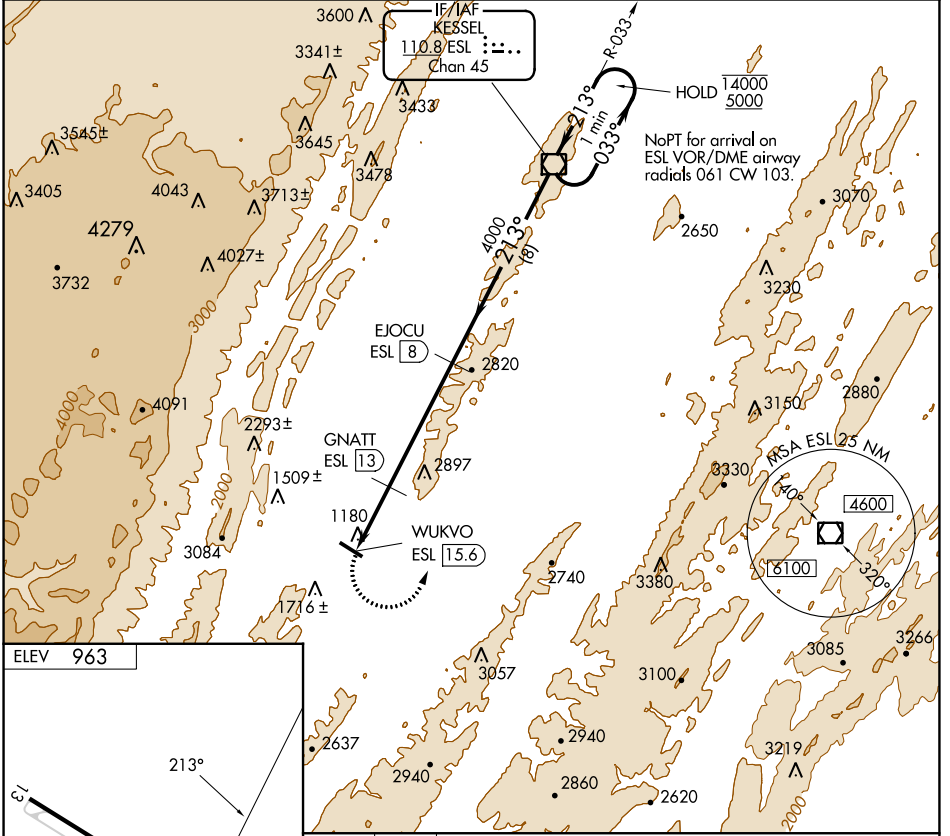
VOR/DME ESL 110.8 Chan 45	APP CRS 213°	Rwy Idg TDZE Apt Elev N/A N/A 963
---	------------------------	---

VOR/DME-A

GRANT COUNTY (W99)

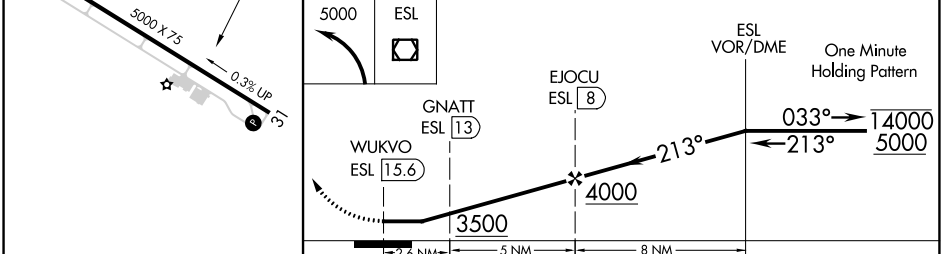
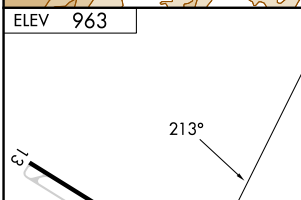
MISSSED APPROACH: Climbing left turn to 5000 direct ESL VOR/DME and hold.

AWOS-3 124.475	WASHINGTON CENTER 133.55 322.55	UNICOM 122.8 (CTAF)
--------------------------	---	-------------------------------



NE-4, 03 OCT 2024 to 31 OCT 2024

NE-4, 03 OCT 2024 to 31 OCT 2024



CATEGORY	A	B	C	D
CIRCLING	3100-1¼ 2137 (2200-1¼)	3100-1½ 2137 (2200-1½)		NA