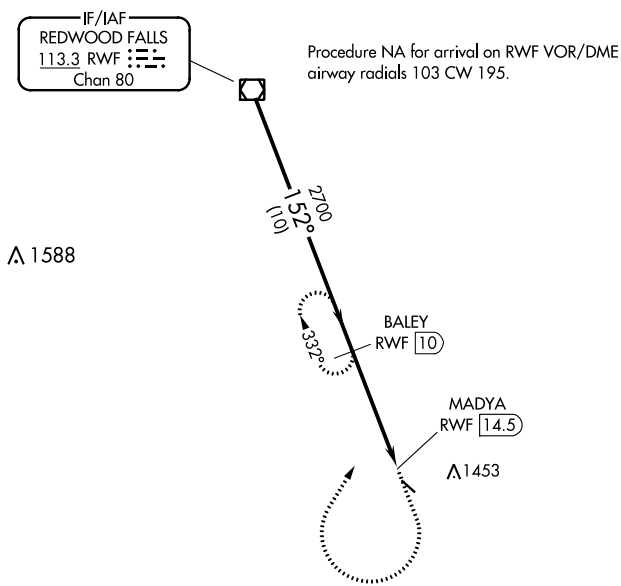


VOR/DME RWF <b>113.3</b> Chan <b>80</b>	APP CRS <b>152°</b>	Rwy Idg <b>3402</b> TDZE <b>1073</b> Apt Elev <b>1073</b>
---	------------------------	---

**VOR RWY 13**  
SPRINGFIELD MUNI (D42)

DME required.	MISSED APPROACH: Climb to 2000 then climbing right turn to 2700 on heading 030° and RWF R-152 to BALEY/10 DME and hold.
<p>▼ Procedure NA at night. Rwy 13 helicopter visibility reduction below 1 SM NA. Use Redwood Falls altimeter setting.</p> <p>▲ NA</p>	

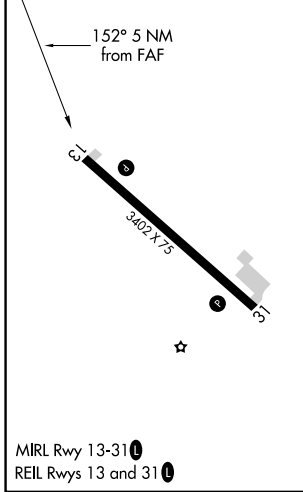
RWF ASOS <b>126.575</b>	MINNEAPOLIS CENTER <b>127.1 290.2</b>	UNICOM <b>122.8 (CTAF) 0</b>
----------------------------	--	---------------------------------



NC-1, 03 OCT 2024 to 31 OCT 2024

NC-1, 03 OCT 2024 to 31 OCT 2024

ELEV 1073	TDZE 1073
-----------	-----------



VGSI and descent angles not coincident (VGSI Angle 3.00/TCH 20).		2000	2700	RWF R-152	BALEY RWF 10
RWF VOR/DME	BALEY RWF 10	↑	hdg 030°		
2700	2700	3.01° TCH 40		MADYA RWF 14.5	
10 NM		4.5 NM		0.5	
CATEGORY	A	B	C	D	
S-13	1620-1	547 (600-1)	1620-1¾ 547 (600-1¾)	NA	
CIRCLING	1660-1 587 (600-1)	1820-1 747 (800-1)	1820-2¼ 747 (800-2¼)	NA	