

| | | | |
|--|------------------------|-----------------------------|---|
| WAAS CH 82600 W11A | APP CRS 109° | Rwy Idg TDZE Apt Elev | 6000 310 310 |
|--|------------------------|-----------------------------|---|

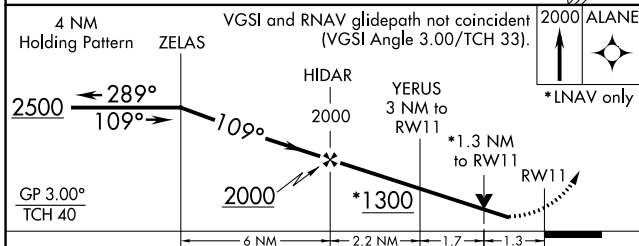
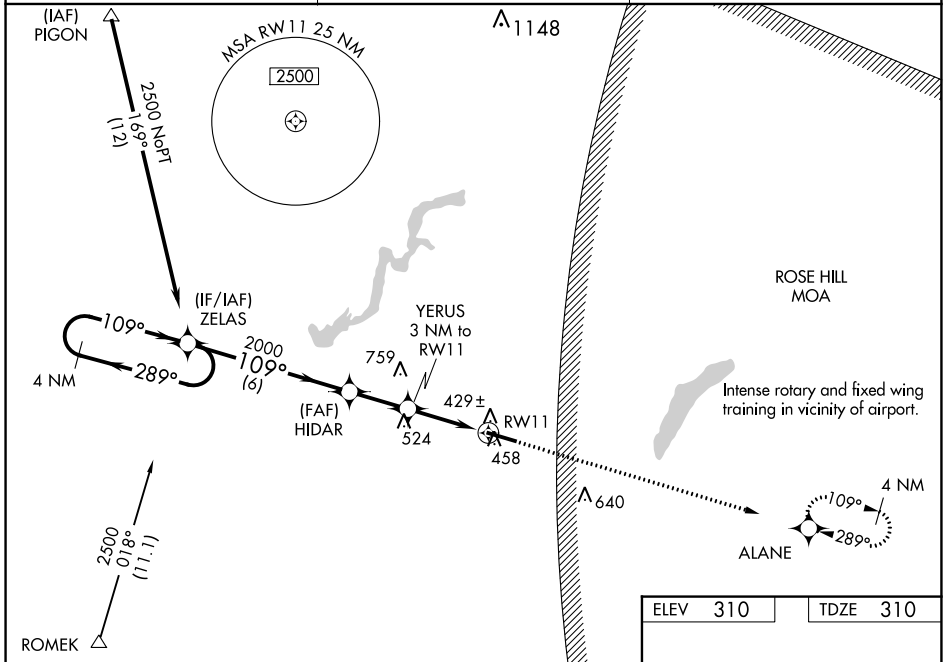
RNAV (GPS) RWY 11

SOUTH ALABAMA RGNL AT BILL BENTON FLD (79J)

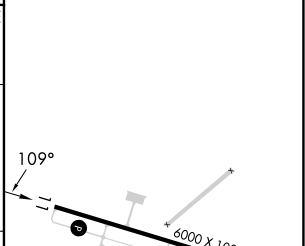
⚠ For uncompensated Baro-VNAV systems, LNAV/VNAV NA below -15°C (5°F) or above 54°C (130°F). DME/DME RNP-0.3 NA. Helicopter visibility reduction below 3/4 SM NA. When local altimeter setting not received, use Cairns AAF (Fort Novosel) altimeter setting and increase all DA 82 feet, all MDA 100 feet. Increase all LPV and LNAV/VNAV visibilities 3/8 mile all Cats, LNAV and Circling Cats C and D 1/4 mile. Baro-VNAV and VDP NA when using Cairns AAF (Fort Novosel) altimeter setting.

MISSED APPROACH: Climb to 2000 direct ALANE and hold.

| | | |
|------------------------|---|---------------------------------|
| ASOS 134.875 | CAIRNS APP CON ★ 133.45 239.275 | UNICOM 122.8 (CTAF) 0 |
|------------------------|---|---------------------------------|



| | |
|----------|----------|
| ELEV 310 | TDZE 310 |
|----------|----------|



| CATEGORY | A | B | C | D |
|--------------|---------------------------|-------------|-----------------|-----------------|
| LPV DA | 615-1 305 (400-1) | | | |
| LNAV/VNAV DA | 655-1 3/8 345 (400-1 1/8) | | | |
| LNAV MDA | 760-1 | 450 (500-1) | 760-1 3/8 | 450 (500-1 1/8) |
| CIRCLING | 820-1 | 510 (600-1) | 860-1 1/2 | 940-2 |
| | | | 550 (600-1 1/2) | 630 (700-2) |

MIRL Rwy 11-29 0
REIL Rwy 11 and 29

SE-4, 03 OCT 2024 to 31 OCT 2024

SE-4, 03 OCT 2024 to 31 OCT 2024