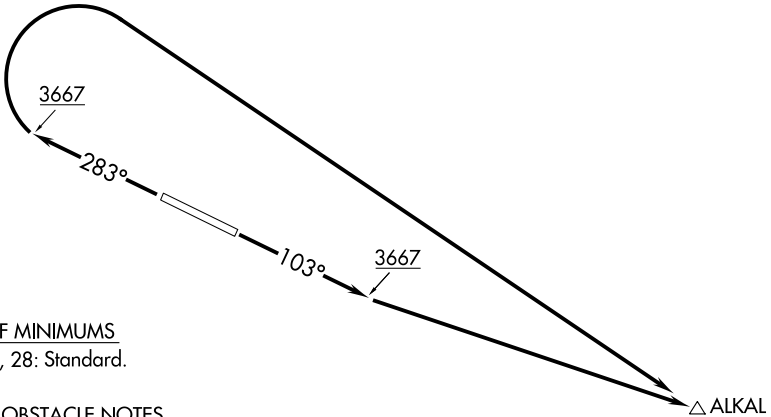


ALKAL ONE DEPARTURE (OBSTACLE) (RNAV)

MOUNTAIN HOME APP CON*
124.8 259.1

RNAV 1-GPS



TAKEOFF MINIMUMS
Rwys 10, 28: Standard.

TAKEOFF OBSTACLE NOTES

- Rwy 10: Lighting 9' from DER, 28' left of centerline, 1' AGL/3159' MSL.
Vegetation 17' from DER, 209' left of centerline, 3' AGL/3160' MSL.
Vegetation beginning 37' from DER, 193' left of centerline, up to 5' AGL/3162' MSL.
Terrain beginning 39' from DER, 379' right of centerline, up to 3159' MSL.
Vehicles on road beginning 381' from DER, 487' right of centerline, up to 3174' MSL.
Buildings beginning 574' from DER, 555' right of centerline, up to 41' AGL/3197' MSL.
Transmission lines, catenary beginning 1106' from DER, 461' left of centerline, up to 46' AGL/3196' MSL.
Catenaries, pole, transmission lines beginning 1243' from DER, 65' left of centerline, up to 52' AGL/3198' MSL.
Transmission lines, pole beginning 1483' from DER, 49' right of centerline, up to 52' AGL/3201' MSL.
Tower 3249' from DER, 889' right of centerline, 126' AGL/3273' MSL.
- Rwy 28: Fence 32' from DER, 494' right of centerline, 9' AGL/3175' MSL.
Fence 150' from DER, 494' right of centerline, 9' AGL/3178' MSL.
Fence 274' from DER, 493' right of centerline, 9' AGL/3180' MSL.
Fence 366' from DER, 494' right of centerline, 9' AGL/3181' MSL.
Fence 566' from DER, 494' right of centerline, 9' AGL/3183' MSL.
Vehicles on road beginning 898' from DER, 268' right of centerline, up to 3196' MSL.

NOTE: Chart not to scale.

DEPARTURE ROUTE DESCRIPTION

TAKEOFF RUNWAY 10: Climb on heading 103° to 3667, then direct ALKAL, thence

TAKEOFF RUNWAY 28: Climb on heading 283° to 3667, then climbing right turn direct ALKAL, thence

. . . . cross ALKAL at above MEA or MCA for route of flight.

NW-1, 03 OCT 2024 to 31 OCT 2024

NW-1, 03 OCT 2024 to 31 OCT 2024