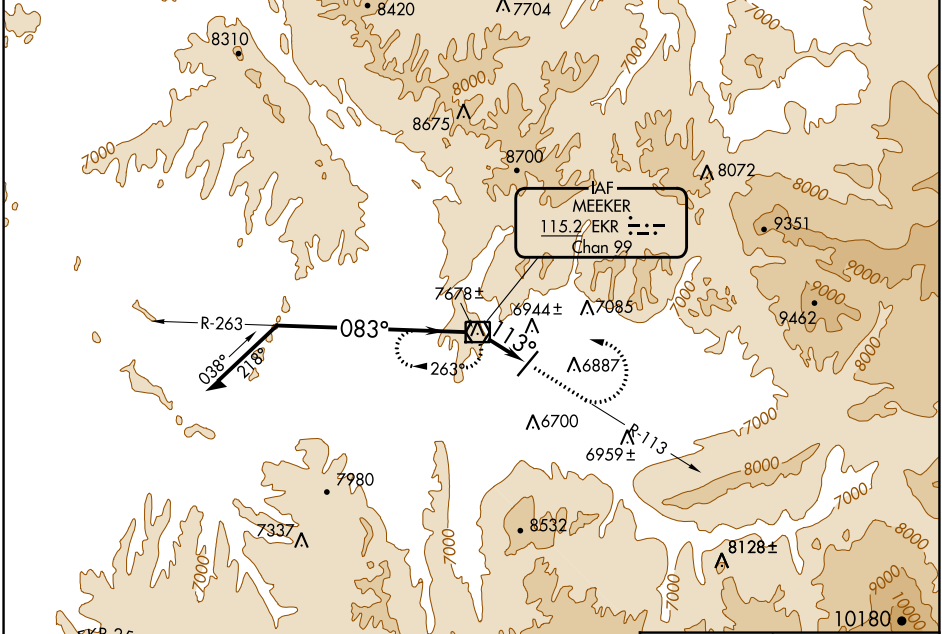


VOR/DME EKR 115.2 Chan 99	APP CRS 113°	Rwy Idg TDZE Apt Elev N/A N/A 6415
---	------------------------	--

VOR-A
MEEKER COULTER FLD (E/O)

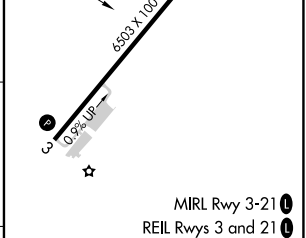
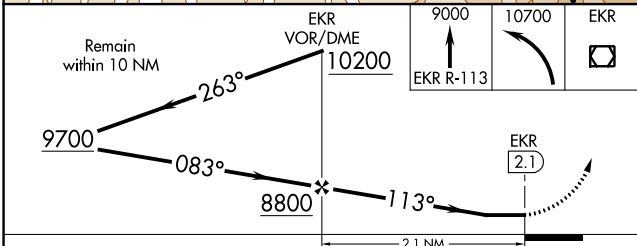
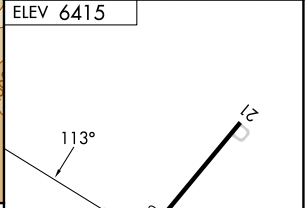
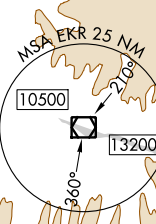
<p>⚠ Circling NA west of Rwy 3-21. Rwy 21 helicopter visibility reduction below 1 SM NA. Circling Rwy 21 NA at night.</p> <p>❄ -25°C</p>	<p>MISSED APPROACH: Climb to 9000 on EKR VOR/DME R-113 then climbing left turn to 10700 direct EKR VOR/DME and hold, continue climb in hold to 10700.</p>
--	---

ASOS 135.525	DENVER CENTER 134.5 327.8	UNICOM 122.8 (CTAF) 0
------------------------	-------------------------------------	---------------------------------



SW-1, 03 OCT 2024 to 31 OCT 2024

SW-1, 03 OCT 2024 to 31 OCT 2024



CATEGORY	A	B	C	D	FAF to MAP 2.1 NM					
CIRCLING	8020-1¼ 1605 (1700-1¼)	8020-1½ 1605 (1700-1½)	8620-3 2205 (2300-3)	NA	Knots	60	90	120	150	180
					Min:Sec	2:06	1:24	1:03	0:50	0:42