

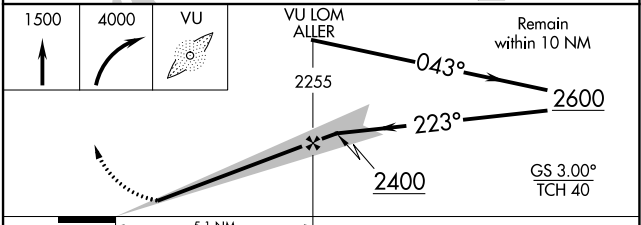
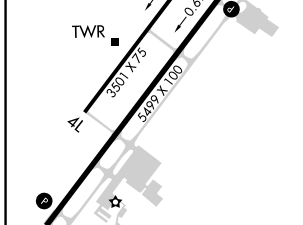
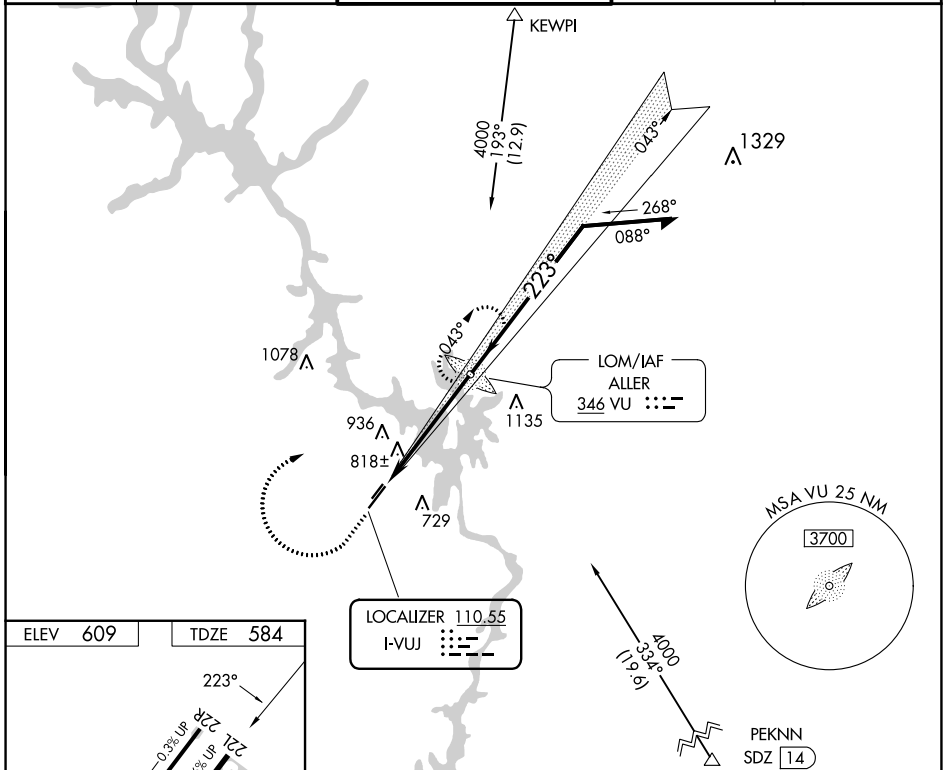
LOC I-VUJ	APP CRS	Rwy Idg	5499
110.55	223°	TDZE	584
		Apt Elev	609

ILS or LOC RWY 22L

STANLY COUNTY (VUJ)

ADF required.		MISSED APPROACH: Climb to 1500 then climbing right turn to 4000 direct ALLER LOM and hold, continue climb-in-hold to 4000.	
<p>Circling Rwy 4L, 22R NA at night. Rwy 22L helicopter visibility reduction below 3/4 SM NA.</p>			

AWOS-3	CHARLOTTE APP CON	STANLY COUNTY TOWER★	GND CON	CLNC DEL
128.175	128.325 307.8	126.275 (CTAF) 0 291.9	121.75 254.375	121.75 254.375



FAF to MAP 5.1 NM					
Knots	60	90	120	150	180
Min:Sec	5:06	3:24	2:33	2:02	1:42
CIRCLING	1260-1	651 (700-1)	1260-1 3/4 651 (700-1 3/4)	1380-2 1/2 771 (800-2 1/2)	

SE-2, 03 OCT 2024 to 31 OCT 2024

SE-2, 03 OCT 2024 to 31 OCT 2024