

(KWEEN5.KWEEN) 24081

AL-6707 (FAA)

# KWEEN FIVE DEPARTURE (RNAV)

STANLY COUNTY (VUJ)  
ALBEMARLE, NORTH CAROLINA

CHARLOTTE DEP CON  
128.325 307.8  
AWOS-3  
128.175  
CLNC DEL  
121.75 254.375  
GND CON  
121.75 254.375  
STANLY COUNTY TOWER\*  
126.275 (CTAF) 291.9

RNAV 1 - DME/DME/IRU or GPS.

RADAR required.

**TOP ALTITUDE:  
3000**

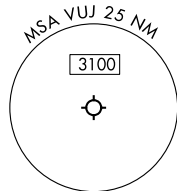
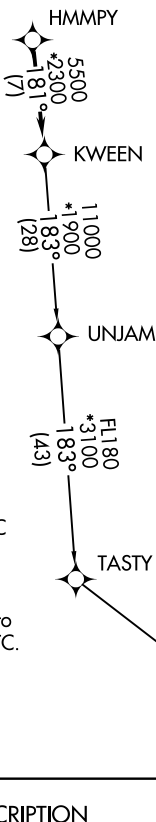


### TAKEOFF MINIMUMS

Rwys 4L, 22R: NA - Environmental.

Rwy 22L: Standard.

Rwy 4R: 300-1 $\frac{3}{4}$  or standard with minimum climb of 315' per NM to 1000.



- NOTE: For turbo jets only.
- NOTE: Transponder code will be issued via PDC or Charlotte CLNC DEL.
- NOTE: If unable to accept climb rates, advise ATC on initial contact.
- NOTE: Upon reaching 10000 MSL, accelerate to and maintain 280K, if unable advise ATC.

NOTE: Chart not to scale.

**DEPARTURE ROUTE DESCRIPTION**

Climb on heading assigned by ATC, on RADAR vectors to HMMPY, then on track 181° to KWEEN, then on assigned transition, maintain 3000, expect filed altitude within 10 minutes after departure.

PITRW TRANSITION (KWEEN5.PITRW)  
UNJAM TRANSITION (KWEEN5.UNJAM)

# KWEEN FIVE DEPARTURE (RNAV)

(KWEEN5.KWEEN) 21MAR24

ALBEMARLE, NORTH CAROLINA  
STANLY COUNTY (VUJ)

SE-2, 03 OCT 2024 to 31 OCT 2024

SE-2, 03 OCT 2024 to 31 OCT 2024