

APP CRS	Rwy Idg	3970
357°	TDZE	1209
	Apt Elev	1209

RNAV (GPS) RWY 35

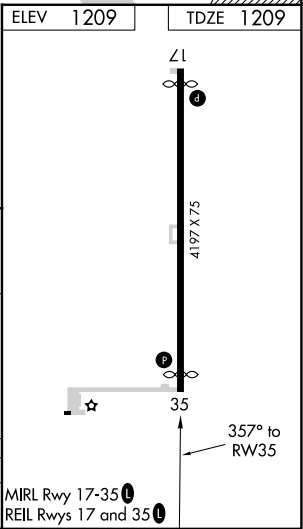
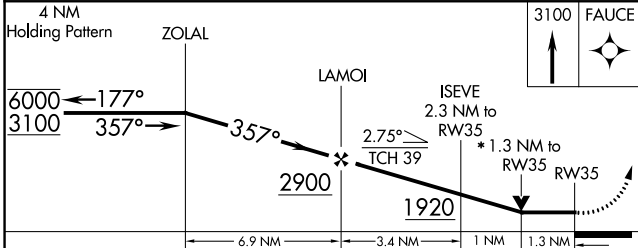
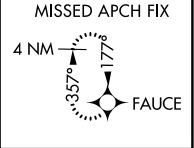
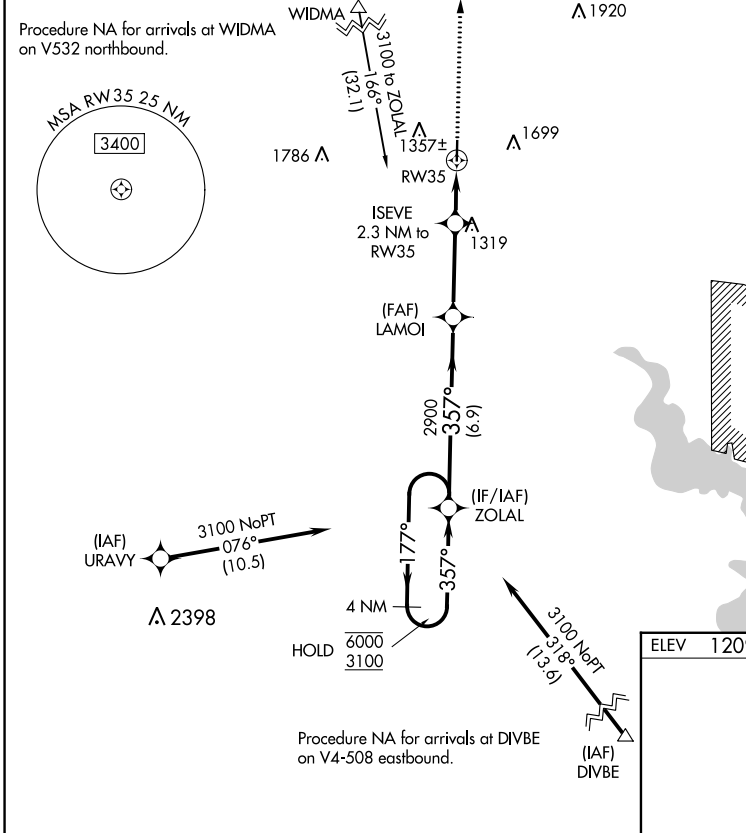
CLAY CENTER MUNI (CYW)

RNP APCH.

NA Rwy 35 helicopter visibility reduction below 3/4 SM NA. VDP NA when using Salina altimeter setting. When local altimeter setting not received, use Salina altimeter setting and increase all MDA 120 feet and LNAV Cat C visibility 3/8 SM.

MISSED APPROACH: Climb to 3100 direct FAUCE and hold.

AWOS-3T	MARSHALL AAF APP CON *	UNICOM
119.95	121.25 254.35	122.8 (CTAF)



CATEGORY	A	B	C	D
LNAV MDA	1580-1	371 (400-1)		NA

MIRL Rwy 17-35
REIL Rws 17 and 35

NC-2, 03 OCT 2024 to 31 OCT 2024

NC-2, 03 OCT 2024 to 31 OCT 2024