

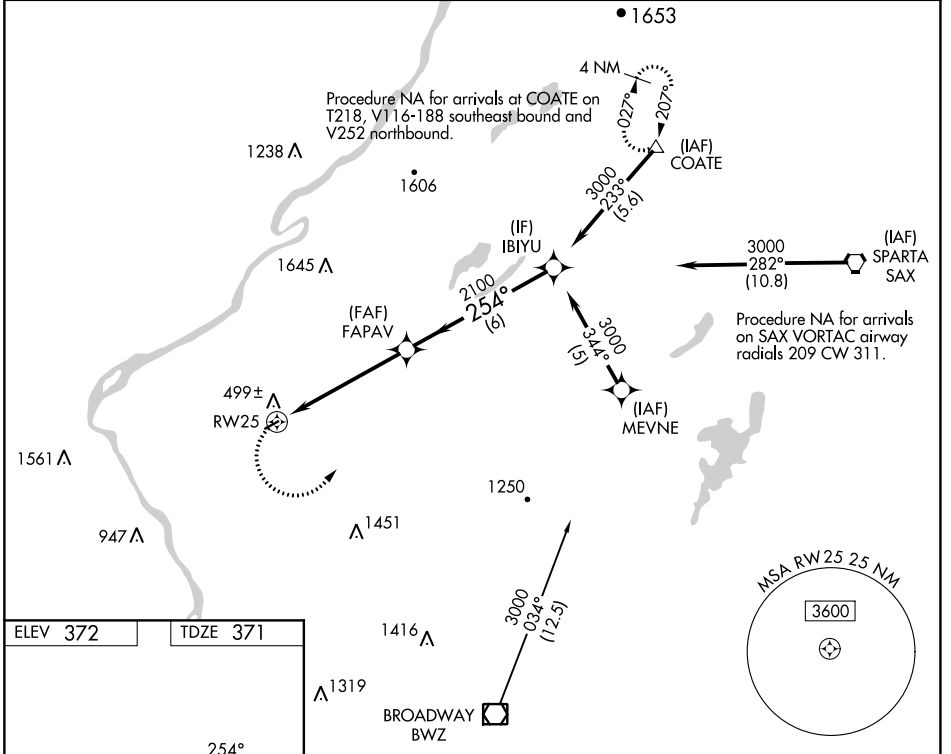
APP CRS <b>254°</b>	Rwy Idg TDZE Apt Elev	<b>2877</b> <b>371</b> <b>372</b>
------------------------	-----------------------------	---

# RNAV (GPS) RWY 25

BLAIRSTOWN (1N7)

RNP APCH.	<p>Procedure NA at night. Obtain local altimeter setting on CTAF; when not received, use Lehigh Valley Intl altimeter setting. Rwy 25 helicopter visibility reduction below 1 SM NA.</p>	<p>MISSED APPROACH: Climbing left turn to 3000 direct COATE and hold.</p>
<p>Procedure NA</p>		

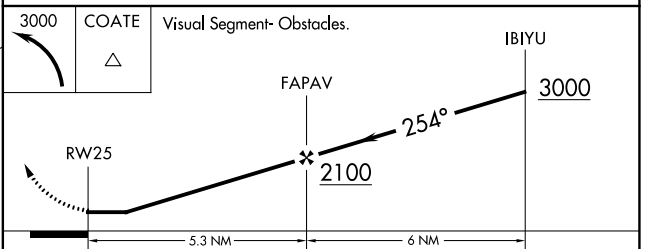
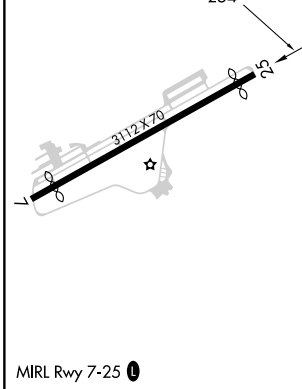
NEWARK APP CON <b>127.6 379.9</b>	UNICOM <b>123.0 (CTAF) 0</b>
--------------------------------------	---------------------------------



NE-2, 03 OCT 2024 to 31 OCT 2024

NE-2, 03 OCT 2024 to 31 OCT 2024

ELEV 372	TDZE 371
----------	----------



CATEGORY	A	B	C	D
LNAV MDA	1260-1¼	889 (900-1¼)		NA
LEHIGH VALLEY INTL ALTIMETER SETTING MINIMUMS				
LNAV MDA	1540-1¼ 1169 (1200-1¼)	1540-1½ 1169 (1200-1½)		NA