

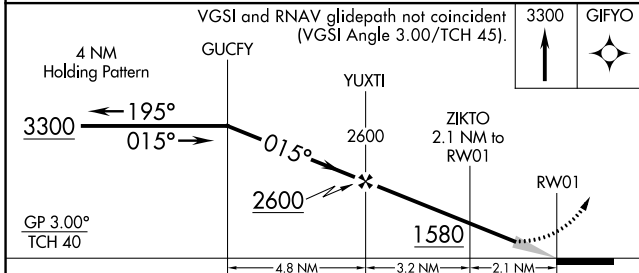
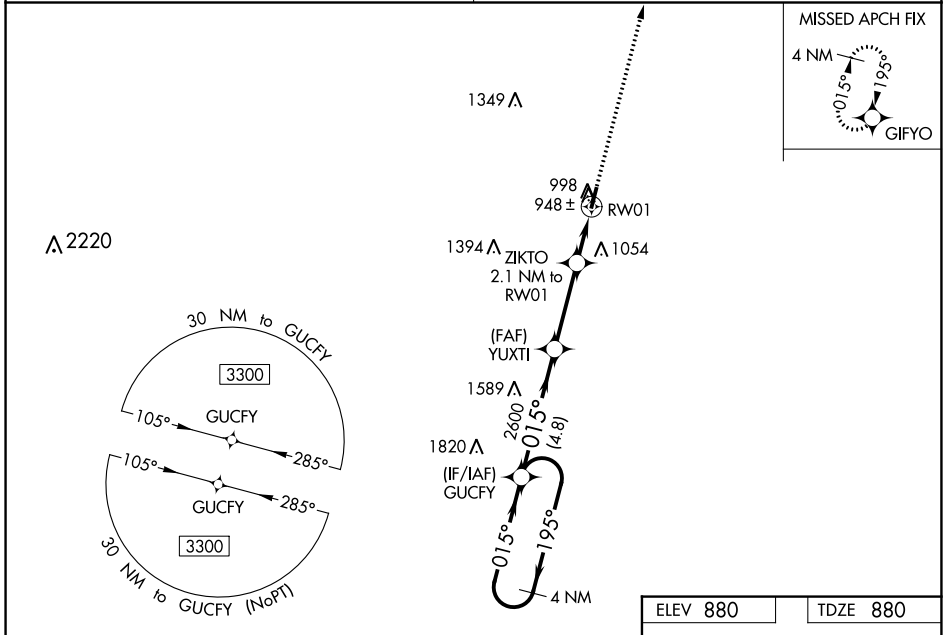
WAAS CH <b>70733</b> W01A	APP CRS <b>015°</b>	Rwy Idg <b>4000</b> TDZE <b>880</b> Apt Elev <b>880</b>
---------------------------------	------------------------	---

# RNAV (GPS) RWY 1

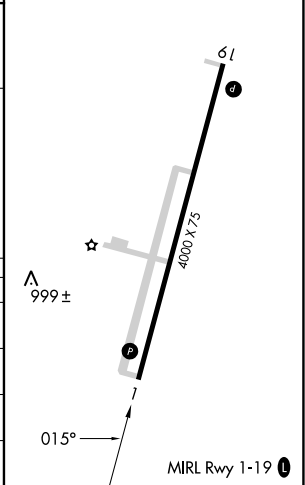
A PAUL VANCE FREDERICKTOWN RGNL (H88)

RNP APCH - GPS.	MISSED APPROACH: Climb to 3300 direct GIFYO and hold.
<p>▼ Baro-VNAV NA. Use Farmington altimeter setting; when not received, use Sparta altimeter setting and increase all DA 111 feet, all MDA 120 feet and increase LPV all Cats visibility, LNAV/VNAV all Cats visibility and LNAV Cat C visibility 3/8 mile, and Circling Cat C visibility 1/4 mile.</p>	

KANSAS CITY CENTER <b>127.475 346.275</b>	UNICOM <b>122.8 (CTAF)</b>
--	-------------------------------



ELEV 880	TDZE 880
----------	----------



CATEGORY	A	B	C	D
LPV DA		1166-1 286 (300-1)		NA
LNAV/VNAV DA		1166-1 286 (300-1)		NA
LNAV MDA		1240-1 360 (400-1)		NA
CIRCLING	1380-1 500 (500-1)	1520-1 640 (700-1)	1640-2 1/4 760 (800-2 1/4)	NA

NC-3, 03 OCT 2024 to 31 OCT 2024

NC-3, 03 OCT 2024 to 31 OCT 2024