

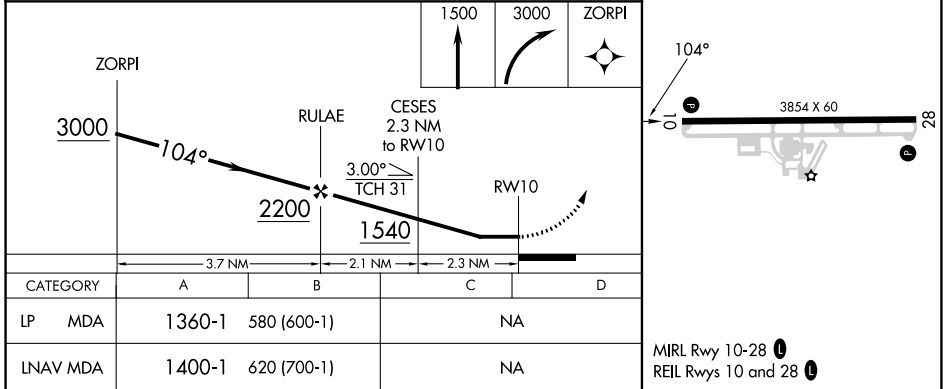
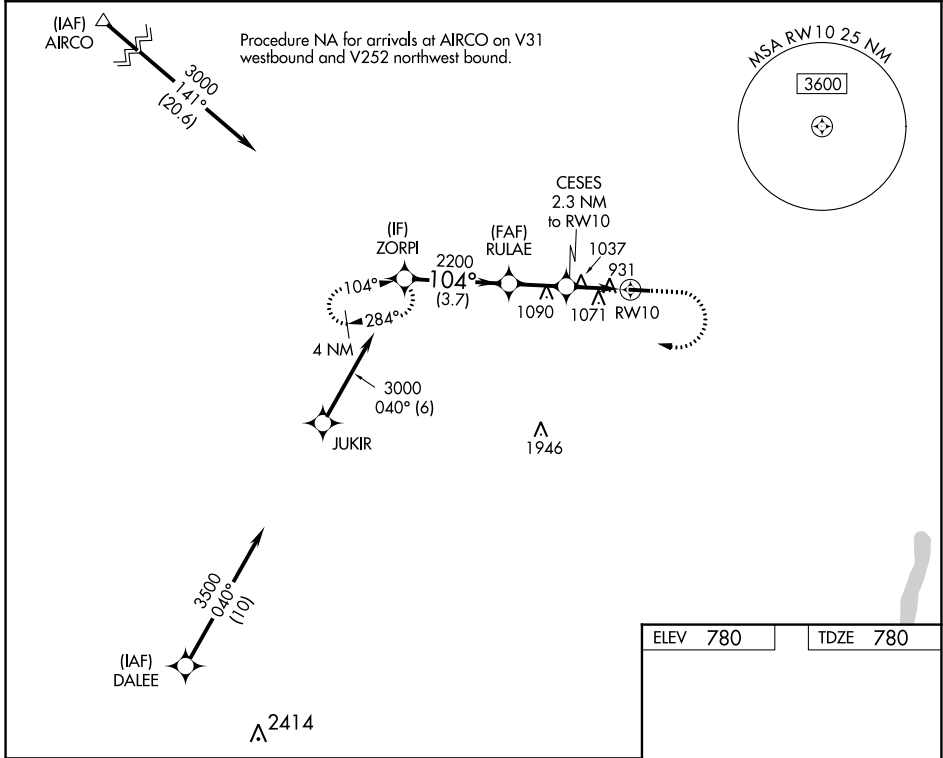
WAAS CH <b>61030</b> <b>W10A</b>	APP CRS <b>104°</b>	Rwy Idg TDZE Apf Elev	<b>3854</b> <b>780</b> <b>780</b>
--	------------------------	-----------------------------	---

# RNAV (GPS) RWY 10

LE ROY (5GⓈ)

RNP APCH-GPS.		MISSED APPROACH: Climb to 1500 then climbing right turn to 3000 direct ZORPI and hold.
Procedure NA at night. Rwy 10 helicopter visibility reduction below 1 SM NA. Use Rochester altimeter setting.		

ROC ASOS <b>124.825</b>	ROCHESTER APP CON <b>123.7 322.3</b>	UNICOM <b>122.8 (CTAF) 0</b>
----------------------------	---	---------------------------------



NE-2, 03 OCT 2024 to 31 OCT 2024

NE-2, 03 OCT 2024 to 31 OCT 2024