

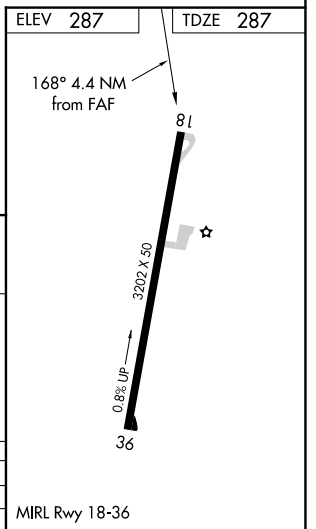
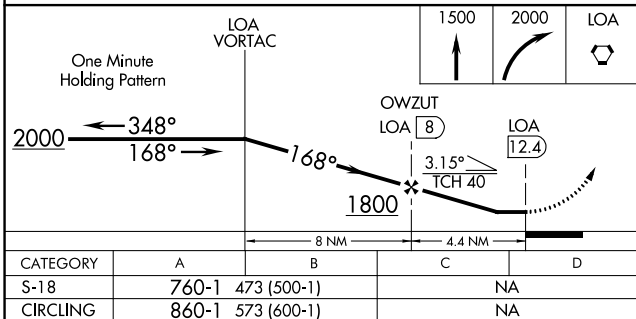
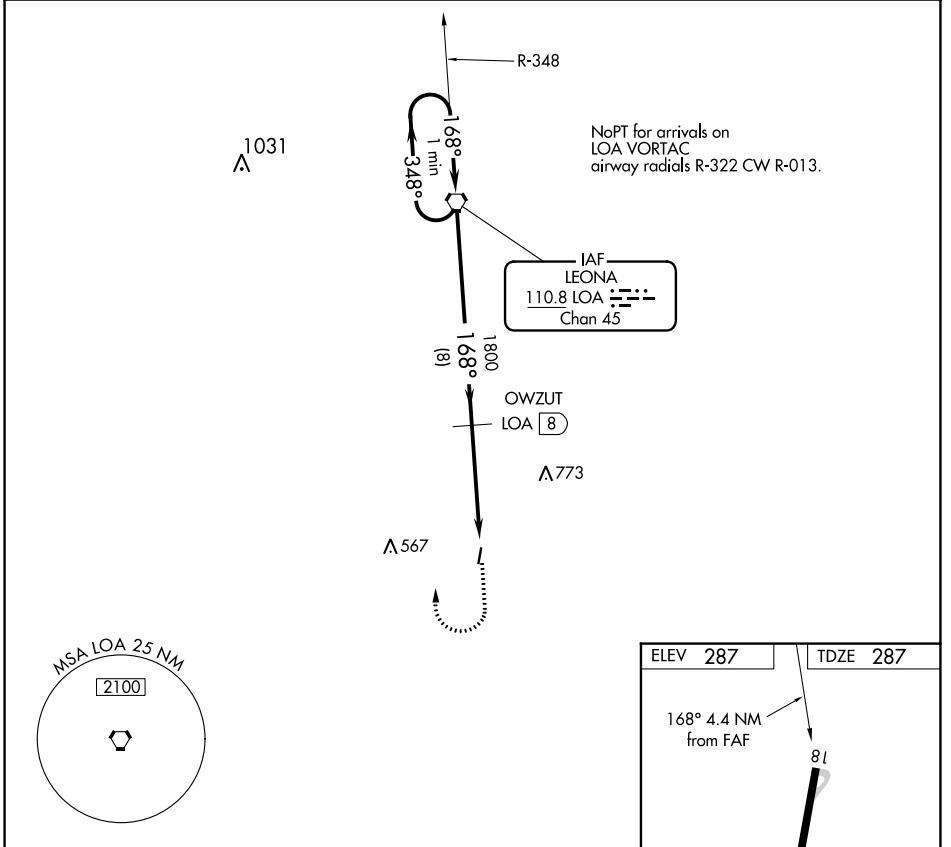
VORTAC LOA 110.8 Chan 45	APP CRS 168°	Rwy Idg 3202 TDZE 287 Apt Elev 287
--	------------------------	---

VOR/DME RWY 18

MADISONVILLE MUNI (51R)

<p>▼ Use Huntsville Muni altimeter setting. ▲ NA Procedure NA at night. Helicopter visibility reduction below 1 SM NA.</p>	<p>MISSED APPROACH: Climb to 1500, then climbing right turn to 2000 direct LOA VORTAC and hold.</p>
--	---

<p>UTS ASOS 119,425</p>	<p>HOUSTON APP CON 134.8 269.6</p>	<p>CTAF 122.9</p>
------------------------------------	---	------------------------------



SC-5, 03 OCT 2024 to 31 OCT 2024

SC-5, 03 OCT 2024 to 31 OCT 2024