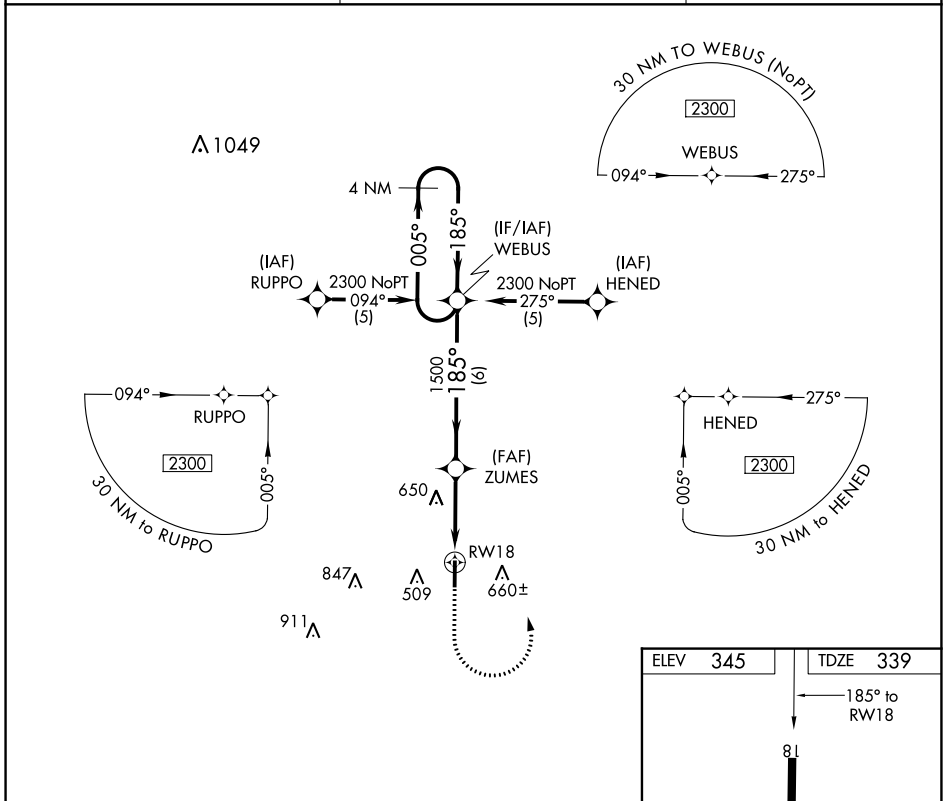


APP CRS	Rwy Idg	4220
185°	TDZE	339
	Apt Elev	345

RNAV (GPS) RWY 18

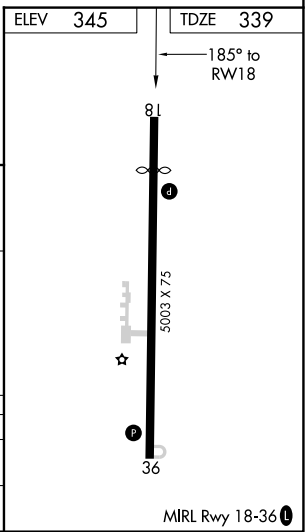
DR C P SAVAGE SR (53A)

<p>NA</p> <p>DME/DME RNP-0.3 NA. Procedure NA at night. Helicopter visibility reduction below 1 SM NA. Use Americus altimeter setting, when not received use Macon altimeter setting and increase all MDA 20 feet.</p>	<p>MISSED APPROACH: Climb to 1500 then climbing left turn to 2300 direct WEBUS and hold.</p>	
	<p>ACJ AWOS-3</p> <p>128.375</p>	<p>ATLANTA APP CON *</p> <p>124.2 279.6</p>



VGSI and descent angles not coincident (VGSI Angle 3.30/TCH 35).

4 NM Holding Pattern	1500	2300	WEBUS	
<p>2300 ← 005°</p> <p>185° →</p> <p>3.03° TCH 45</p> <p>6 NM</p> <p>3.5 NM</p>				
CATEGORY	A	B	C	D
LNVA MDA	1020-1	681 (700-1)	1020-2 681 (700-2)	NA
CIRCLING	1020-1	675 (700-1)	1120-2¼ 775 (800-2¼)	NA



SE-4, 03 OCT 2024 to 31 OCT 2024

SE-4, 03 OCT 2024 to 31 OCT 2024