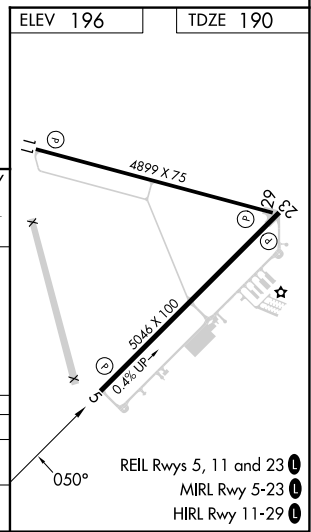
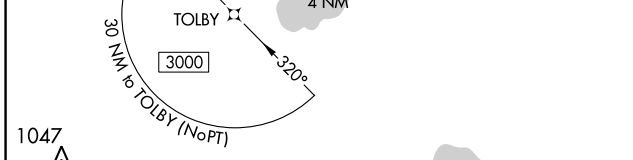
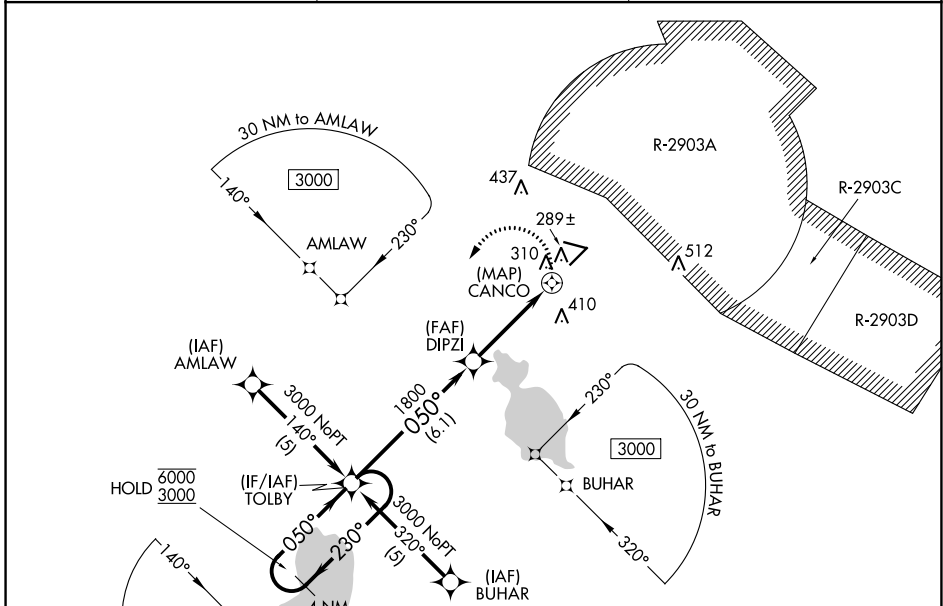


APP CRS	Rwy Idg	5046
050°	TDZE	190
	Apt Elev	196

RNAV (GPS) RWY 5

KEYSTONE HEIGHTS (42J)

RNP APCH.		MISSED APPROACH: Climbing left turn to 3000 direct TOLBY and hold.
<p>▼ Circling to Rwy 11, 23, 29 NA at night. Circling NA for Cats B and C northeast of Rwy 11-29. Rwy 5 helicopter visibility reduction below 3/4 SM NA.</p> <p>▲ NA When local altimeter setting not received, use Gainesville altimeter setting and increase all MDAs 60 feet.</p>	<p>AWOS-3 124.275</p>	
<p>JACKSONVILLE APP CON 118.175 338.25</p>		<p>UNICOM 122.7 (CTAF) 0</p>



4 NM Holding Pattern	TOLBY	DIPZI	CANCO
6000	3000	1800	3000
230°	050°	050°	3.04°
		TCH 40	
	6.1 NM	3.9 NM	1 NM

CATEGORY	A	B	C	D
LNVA MDA	600-1¼ 410 (500-1¼)			NA
CIRCLING	620-1¼ 424 (500-1¼)	660-1¼ 464 (500-1¼)	720-1½ 524 (600-1½)	NA

SE-3, 03 OCT 2024 to 31 OCT 2024

SE-3, 03 OCT 2024 to 31 OCT 2024