

WAAS CH <b>82005</b> <b>W16A</b>	APP CRS <b>163°</b>	Rwy Idg TDZE Apt Elev	<b>5000</b> <b>1515</b> <b>1535</b>
--	------------------------	-----------------------------	---

# RNAV (GPS) RWY 16

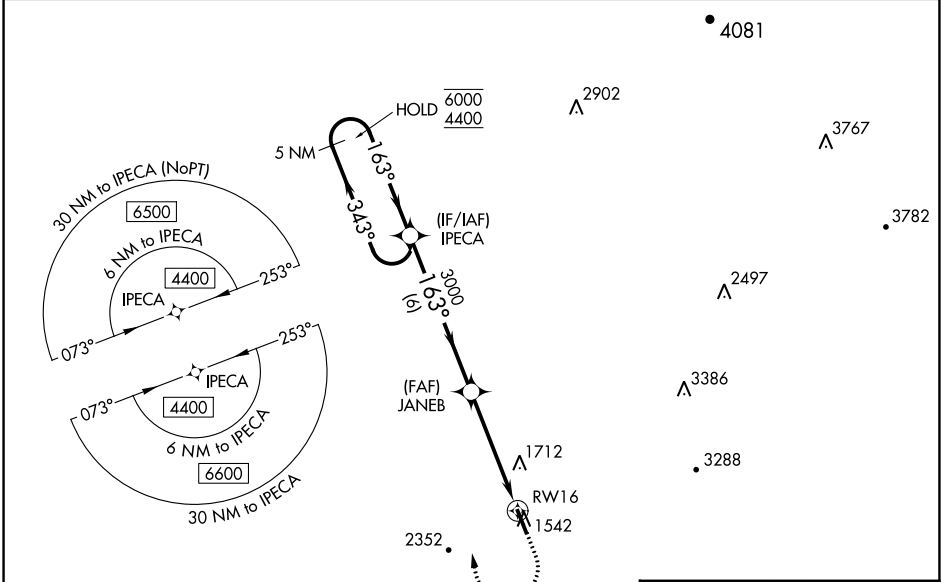
PICKENS COUNTY (JZP)

RNP APCH - GPS.

**⚠** Rwy 16 helicopter visibility reduction below 3/4 SM NA.  
For uncompensated Baro-VNAV systems, LNAV/VNAV NA below -18°C or above 54°C.

MISSED APPROACH: Climb to 3000 then climbing right turn to 4400 direct IPECA and hold.

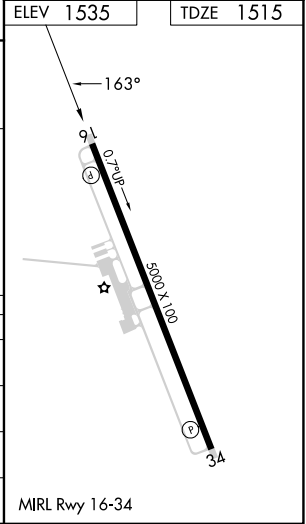
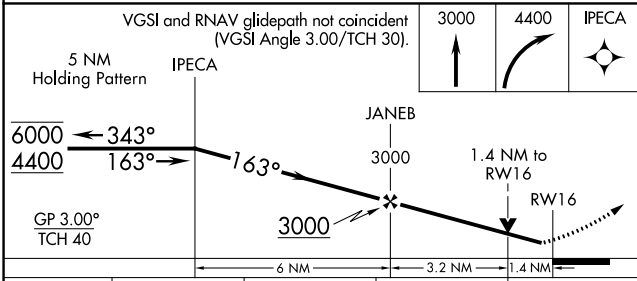
AWOS-3PT <b>120.025</b>	ATLANTA CENTER <b>133.1 342.425</b>	UNICOM <b>122.725 (CTAF)</b>
----------------------------	--	---------------------------------



SE-4, 03 OCT 2024 to 31 OCT 2024

SE-4, 03 OCT 2024 to 31 OCT 2024

ELEV 1535	TDZE 1515
-----------	-----------



CATEGORY	A	B	C	D
LPV DA		1915-1 1/8	400 (400-1 1/8)	
LNAV/VNAV DA		1980-1 3/8	465 (500-1 3/8)	
LNAV MDA	1980-1	465 (500-1)	1980-1 3/8	465 (500-1 3/8)
CIRCLING	1980-1 445 (500-1)	2360-1 1/4 825 (900-1 1/4)	2760-3	1225 (1300-3)