

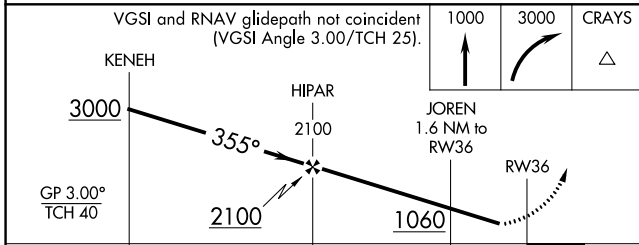
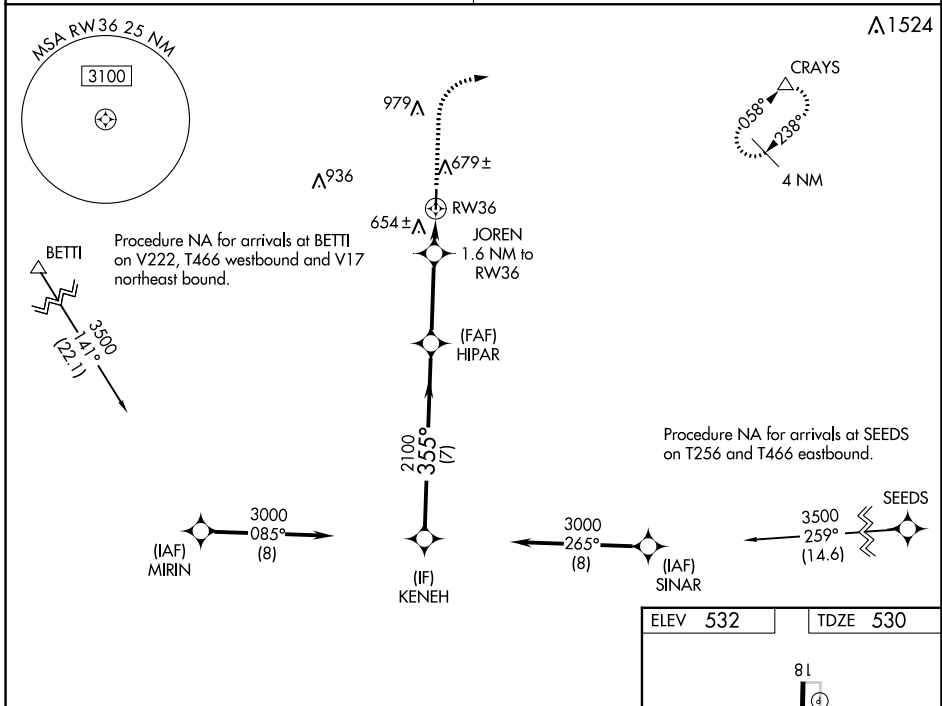
| | | | |
|--|------------------------|-----------------------------|---|
| WAAS CH 53323 W36A | APP CRS 355° | Rwy Idg TDZE Apt Elev | 4001 530 532 |
|--|------------------------|-----------------------------|---|

RNAV (GPS) RWY 36

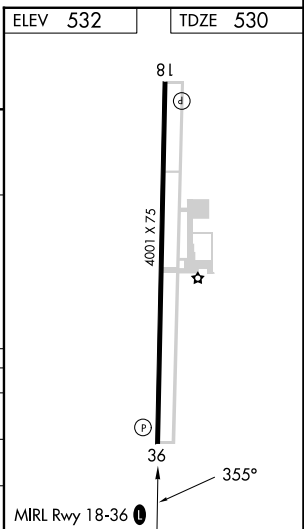
LOCKHART MUNI (50R)

| | | |
|---|--|---|
| RNP APCH - GPS. | | MISSED APPROACH: Climb to 1000, then climbing right turn to 3000 direct CRAYS and hold. |
| <p>∇ Rwy 36 helicopter visibility reduction below 3/4 NA. Baro-VNAV NA. Use San Marcos altimeter setting; when not received, use Austin-Bergstrom Intl altimeter setting; increase LPV DA to 830 feet; increase LNAV/VNAV DA to 880 feet; increase all MDAs 20 feet and visibility Cat C 1/8 SM.</p> | | |

| | |
|---|---------------------------------|
| AUSTIN APP CON 120.875 270.25 | UNICOM 122.8 (CTAF) 0 |
|---|---------------------------------|



| CATEGORY | A | B | C | D |
|--------------|-----------|-----------------|------------------------------|----|
| LPV DA | 813-1 | 283 (300-1) | | NA |
| LNAV/VNAV DA | 863-1 1/8 | 333 (400-1 1/8) | | NA |
| LNAV MDA | 940-1 | 410 (500-1) | 940-1 1/8 410 (500-1 1/8) | NA |



SC-3, 03 OCT 2024 to 31 OCT 2024

SC-3, 03 OCT 2024 to 31 OCT 2024