

WAAS CH <b>56605</b> <b>W05A</b>	APP CRS <b>047°</b>	Rwy Idg TDZE Apt Elev	<b>5003</b> <b>1219</b> <b>1219</b>
--	------------------------	-----------------------------	---

# RNAV (GPS) RWY 5

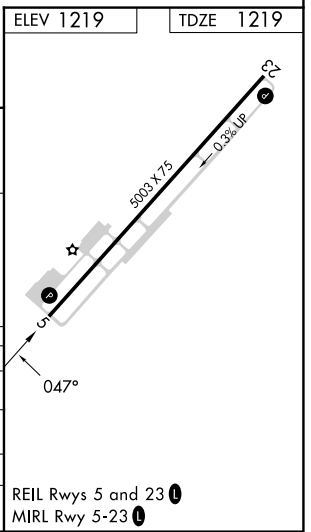
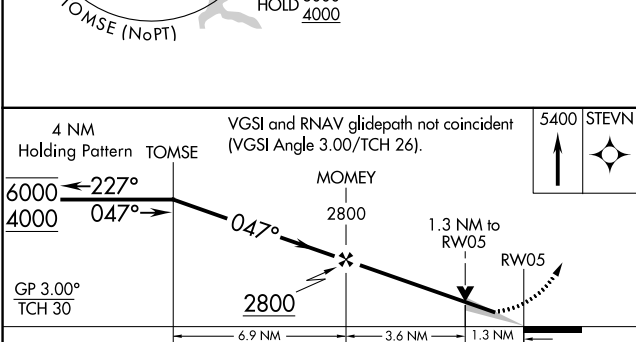
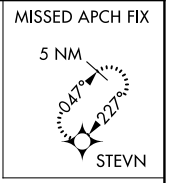
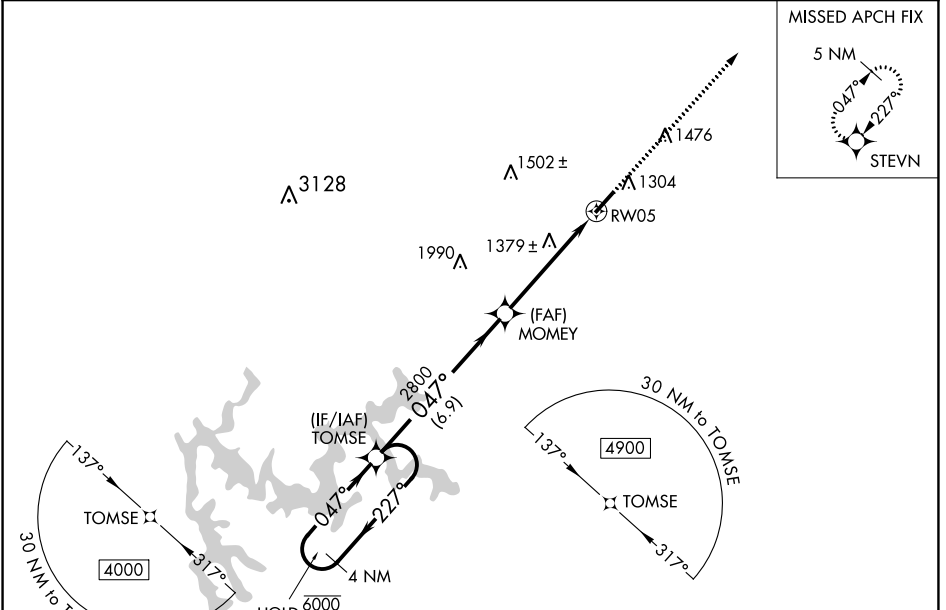
CHEROKEE COUNTY RGNL (CNI)

RNP APCH-GPS.

▼ Circling Rwy 23 NA at night.  
 ▲ For uncompensated Baro-VNAV systems, LNAV/VNAV NA below -17°C or above 36°C.

MISSED APPROACH: Climb to 5400 direct STEVN and hold, continue climb-in-hold to 5400.

AWOS-3PT <b>119.825</b>	ATLANTA APP CON <b>121.0 268.7</b>	UNICOM <b>123.0 (CTAF) 0</b>
----------------------------	---------------------------------------	---------------------------------



CATEGORY	A	B	C	D
LPV DA		1469-7/8	250 (300-7/8)	
LNAV/VNAV DA		1554-1 1/8	335 (400-1 1/8)	
LNAV MDA	1640-1	421 (500-1)	1640-1 1/4	421 (500-1 1/4)
CIRCLING	1720-1	501 (600-1)	1820-1 3/4 601 (700-1 3/4)	2040-2 3/4 821 (900-2 3/4)

REIL Rwy 5 and 23 0  
MIRL Rwy 5-23 0

SE-4, 03 OCT 2024 to 31 OCT 2024

SE-4, 03 OCT 2024 to 31 OCT 2024