

| | | |
|--|------------------------|---|
| WAAS CH 62817 W17A | APP CRS 174° | Rwy Idg 3700 TDZE 12 Apt Elev 12 |
|--|------------------------|---|

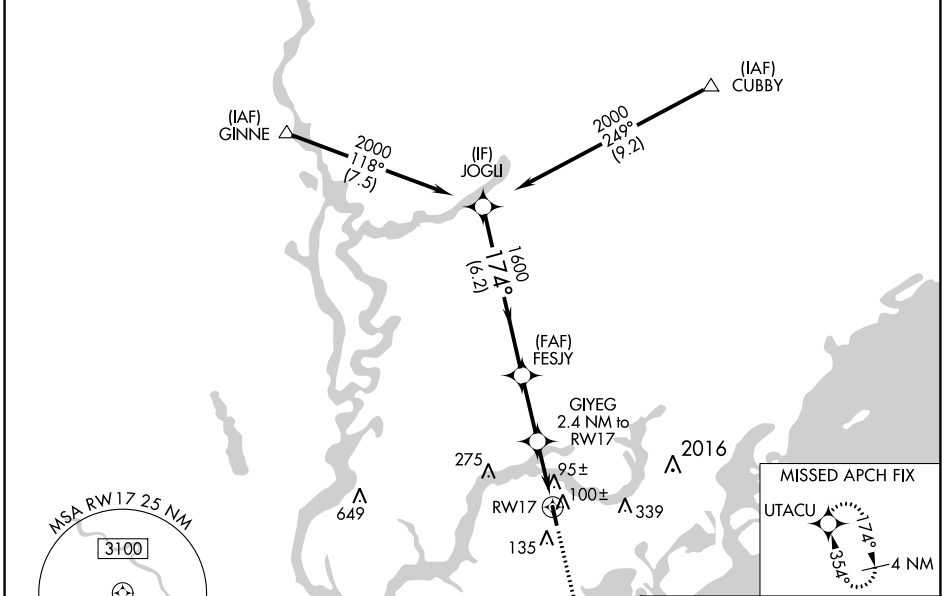
RNAV (GPS) RWY 17

MT PLEASANT RGNL-FAISON FLD (L.R.O)

⚠ For uncompensated Baro-VNAV systems, LNAV/VNAV NA below -15°C (5°F) or above 54°C (130°F). DME/DME RNP-0.3 NA. When local altimeter setting not received, use Charleston AFB/Intl altimeter setting and increase all DA/MDA 40 feet, increase LPV, LNAV/VNAV all Cats, and LNAV Cat C visibility ½ mile. Baro-VNAV NA with Charleston AFB/Intl altimeter setting. VDP NA with Charleston AFB/Intl altimeter setting. Helicopter visibility reduction below ¾ SM NA.

⚠ MISSED APPROACH: Climb to 3000 direct UTACU and hold, continue climb-in-hold to 3000.

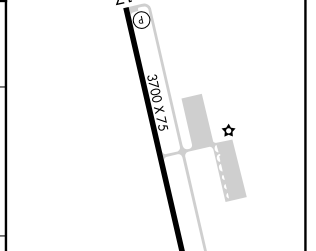
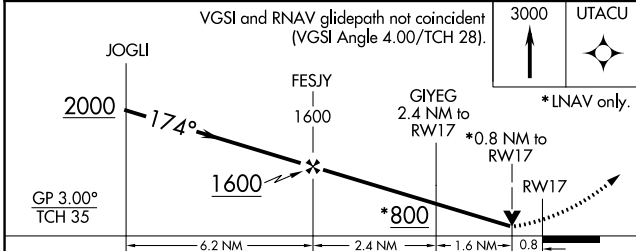
| | | |
|--------------------------|--|---------------------------------|
| AWOS-3 118.625 | CHARLESTON APP CON 121.275 379.925 | UNICOM 122.7 (CTAF) 0 |
|--------------------------|--|---------------------------------|



SE-2, 03 OCT 2024 to 31 OCT 2024

SE-2, 03 OCT 2024 to 31 OCT 2024

| | |
|---------|---------|
| ELEV 12 | TDZE 12 |
|---------|---------|



| CATEGORY | A | B | C | D |
|--------------|----------------------|----------------------|------------------------|----|
| LPV DA | 307-1 | 295 (300-1) | | NA |
| LNAV/VNAV DA | 389-1¼ | 377 (400-1¼) | | NA |
| LNAV MDA | 360-1 | 348 (400-1) | | NA |
| CIRCLING | 460-1 448 (500-1) | 520-1 508 (600-1) | 640-1¾ 628 (700-1¾) | NA |

