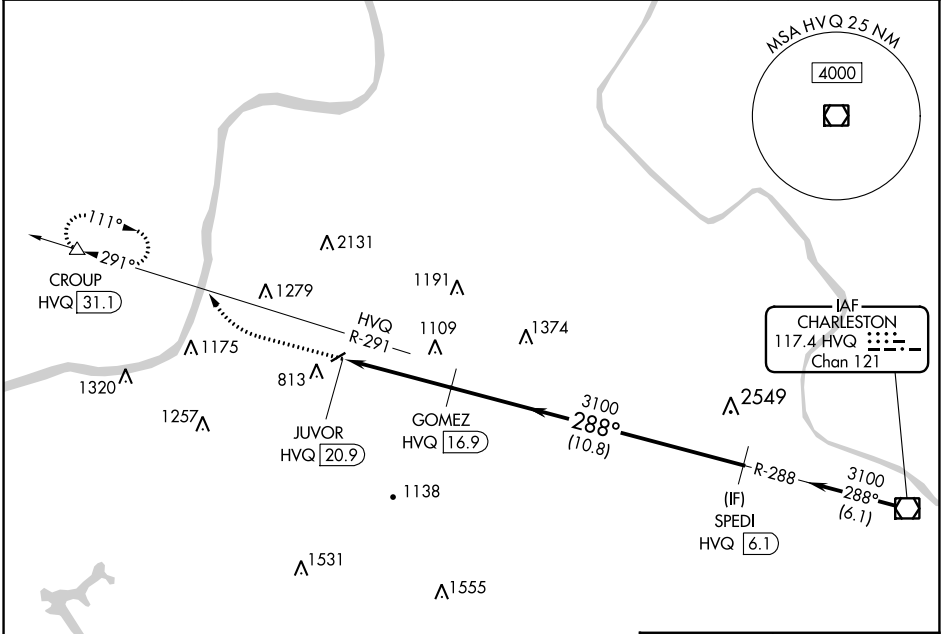


HVQ VOR/DME 117.4 Chan 121	APP CRS 288°	Rwy Idg TDZE Apt Elev	N/A N/A 572
--	------------------------	-----------------------------	--

VOR-A
ONA AIRPARK (12V)

DME required.		MISSED APPROACH: Climbing right turn to 3200 on HVQ VOR/DME R-291 to CROUP/HVQ VOR/DME 31.1 and hold.
NA Circling NA northwest of Rwy 7-25. Procedure NA at night. Use Huntington altimeter setting; when not received, use Point Pleasant altimeter setting.		

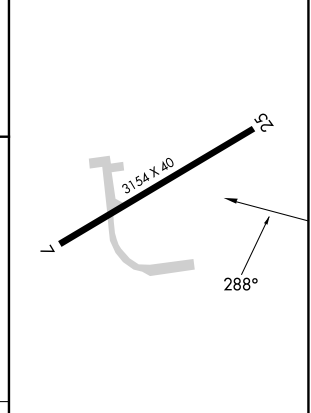
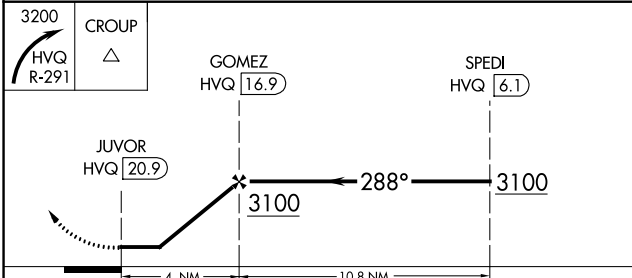
HTS ASOS 125.2	CHARLESTON APP CON 124.1 269.125 (EAST)	HUNTINGTON APP CON 119.75 270.1 (WEST)	UNICOM 122.8 (CTAF)
--------------------------	---	--	-------------------------------



NE-4, 03 OCT 2024 to 31 OCT 2024

NE-4, 03 OCT 2024 to 31 OCT 2024

ELEV 572



CATEGORY	A	B	C	D
CIRCLING	1580-1¼ 1008 (1100-1¼)		NA	

LIRL Rwy 7-25