

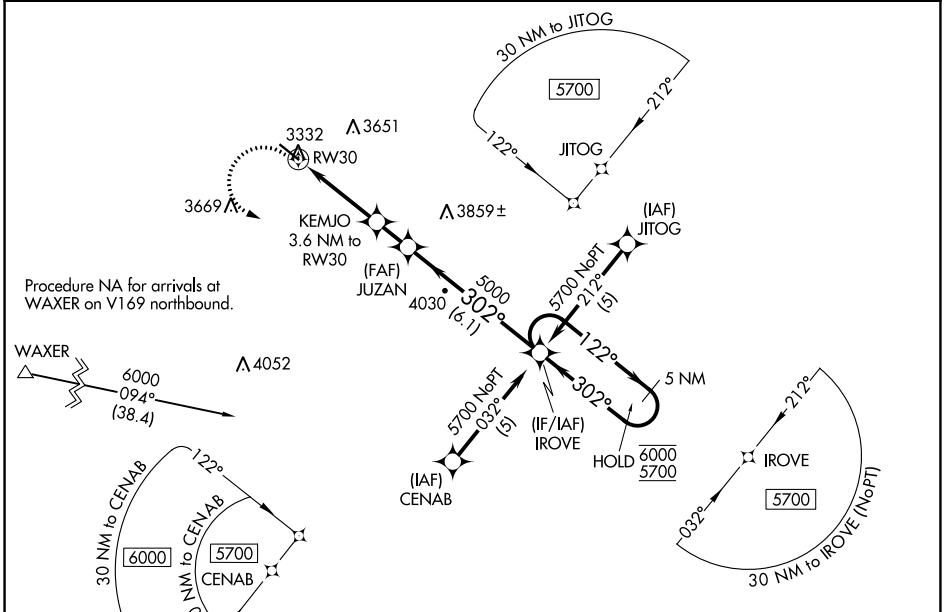
APP CRS 302°	Rwy Idg 5000
	TDZE 3333
	Apt Elev 3333

RNAV (GPS) RWY 30

PINE RIDGE (IEN)

RNP APCH.	MISSED APPROACH: Climbing left turn to 5700 direct IROVE and hold.
Rwy 30 helicopter visibility reduction below 3/4 SM NA.	

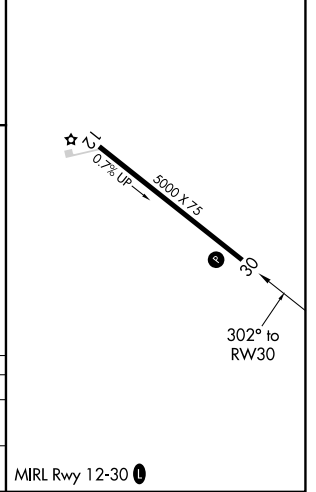
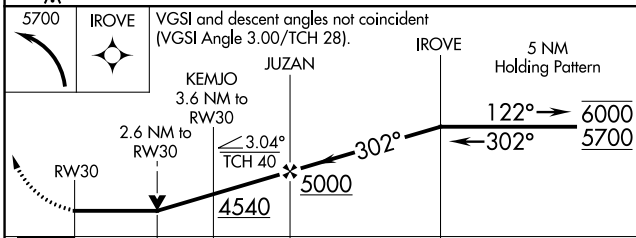
ASOS 126.775	DENVER CENTER 127.95 338.2	CTAF 122.9
------------------------	--------------------------------------	----------------------



NC-1, 03 OCT 2024 to 31 OCT 2024

NC-1, 03 OCT 2024 to 31 OCT 2024

ELEV 3333	TDZE 3333
-----------	-----------



CATEGORY	A	B	C	D
LNAV MDA	4180-1 847 (900-1)	4180-1½ 847 (900-1½)		NA
CIRCLING	4180-1 847 (900-1)	4180-1½ 847 (900-1½)		NA

MIRL Rwy 12-30