

WAAS CH 99541 W07A	APP CRS 067°	Rwy Idg TDZE Apt Elev	6409 5249 5278
--	------------------------	-----------------------------	---

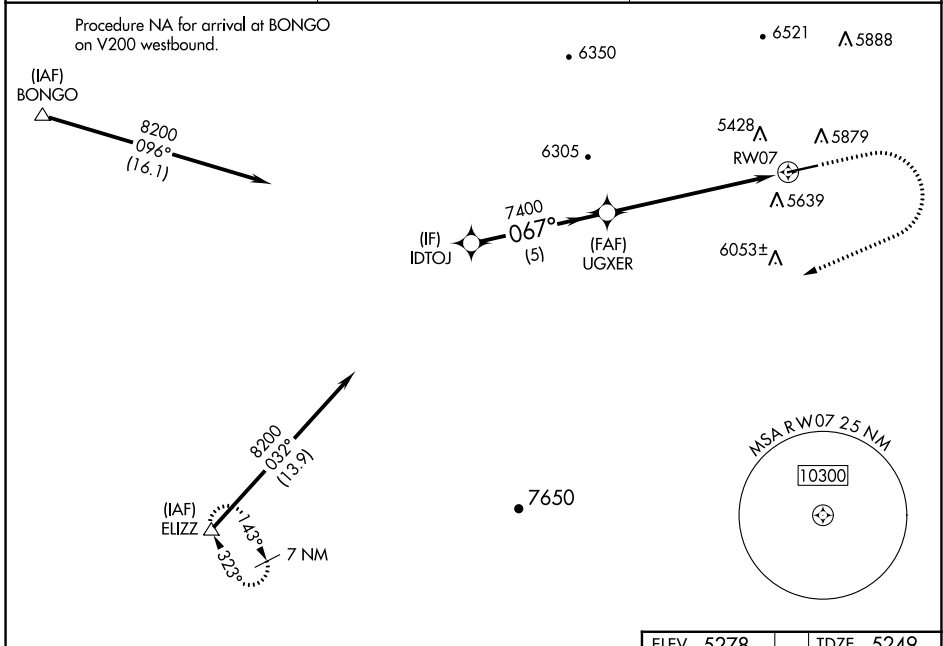
RNAV (GPS) RWY 7

RANGELY (4VØ)

⚠ For uncompensated Baro-VNAV systems, LNAV/VNAV NA below -28°C (-18°F) or above 54°C (130°F). Circling Rwy 25 NA at night. DME/DME RNP-0.3 NA.

MISSED APPROACH: Climb to 5700 then climbing right turn to 10800 direct ELIZZ and hold.
Missed approach requires a minimum climb of 425 feet per NM to 8200 feet.

AWOS-3PT 119.025	DENVER CENTER 134.5 327.8	UNICOM 122.8 (CTAF) 📻
----------------------------	-------------------------------------	--



SW-1, 03 OCT 2024 to 31 OCT 2024

SW-1, 03 OCT 2024 to 31 OCT 2024

		ELEV 5278	TDZE 5249						
		<table border="1"> <tr> <td>5700</td> <td>10800</td> <td>ELIZZ</td> </tr> <tr> <td>↑</td> <td>↷</td> <td>△</td> </tr> </table>	5700	10800	ELIZZ	↑	↷	△	<p>* LNAV only.</p>
5700	10800	ELIZZ							
↑	↷	△							
CATEGORY	A	B	C						
LPV DA#	5599-1	350 (400-1)	NA						
LPV DA	6013-2½	764 (800-2½)	NA						
LNAV/VNAV DA	6041-2½	792 (800-2½)	NA						
LNAV MDA	7180-1¼ 1931 (2000-1¼)	7180-1½ 1931 (2000-1½)	7180-3 1931 (2000-3)						
C CIRCLING	7180-1¼ 1902 (2000-1¼)	7180-1½ 1902 (2000-1½)	7180-3 1902 (2000-3)						
		MIRL Rwy 7-25 📻	REIL Rwy 7 and 25 📻						